

# BMP11 Rabbit mAb

Catalog # AP78678

## Product Information

---

<b>Application</b>	WB, IHC-P, IF, ICC
<b>Primary Accession</b>	<a href="#">O95390</a>
<b>Reactivity</b>	Rat, Human
<b>Host</b>	Rabbit
<b>Clonality</b>	Monoclonal Antibody
<b>Isotype</b>	IgG
<b>Conjugate</b>	Unconjugated
<b>Immunogen</b>	A synthesized peptide derived from human BMP11
<b>Purification</b>	Affinity Chromatography
<b>Calculated MW</b>	45091

## Additional Information

---

<b>Gene ID</b>	10220
<b>Other Names</b>	GDF11
<b>Dilution</b>	WB~~1/500-1/1000 IHC-P~~N/A IF~~1:50~200 ICC~~N/A
<b>Format</b>	Liquid in 10mM PBS, pH 7.4, 150mM sodium chloride, 0.05% BSA, 0.02% sodium azide and 50% glycerol.
<b>Storage</b>	Store at 4°C short term. Aliquot and store at -20°C long term. Avoid freeze/thaw cycles.

## Protein Information

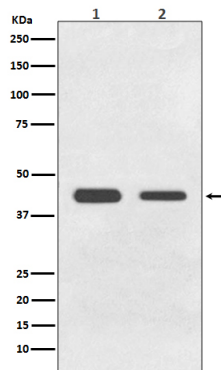
---

<b>Name</b>	GDF11
<b>Synonyms</b>	BMP11 {ECO:0000303   PubMed:10075854}
<b>Function</b>	Secreted signal that acts globally to regulate anterior/posterior axial patterning during development. May play critical roles in patterning both mesodermal and neural tissues (By similarity). It is required for proper vertebral patterning and orofacial development (PubMed: <a href="#">31215115</a> ). Signals through activin receptors type-2, ACVR2A and ACVR2B, and activin receptors type-1, ACVR1B, ACVR1C and TGFBR1 leading to the phosphorylation of SMAD2 and SMAD3 (PubMed: <a href="#">28257634</a> ).
<b>Cellular Location</b>	Secreted.
<b>Tissue Location</b>	In the embryo, strong expression is seen in the palatal epithelia, including the medial edge epithelial and midline epithelial seam of the palatal shelves. Less

pronounced expression is also seen throughout the palatal shelf and tongue mesenchyme

## Images

---



Please note: All products are 'FOR RESEARCH USE ONLY. NOT FOR USE IN DIAGNOSTIC OR THERAPEUTIC PROCEDURES'.