

SOD2 Rabbit mAb

Catalog # AP78674

Product Information

Application	WB, IHC-P
Primary Accession	P04179
Reactivity	Rat, Human, Mouse
Host	Rabbit
Clonality	Monoclonal Antibody
Isotype	IgG
Conjugate	Unconjugated
Immunogen	A synthesized peptide derived from human SOD2
Purification	Affinity Chromatography
Calculated MW	24750

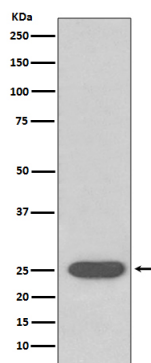
Additional Information

Gene ID	6648
Other Names	SOD2
Dilution	WB~~1/500-1/1000 IHC-P~~N/A
Format	Liquid in 10mM PBS, pH 7.4, 150mM sodium chloride, 0.05% BSA, 0.02% sodium azide and 50% glycerol.
Storage	Store at 4°C short term. Aliquot and store at -20°C long term. Avoid freeze/thaw cycles.

Protein Information

Name	SOD2
Function	Destroys superoxide anion radicals which are normally produced within the cells and which are toxic to biological systems.
Cellular Location	Mitochondrion matrix.

Images



Please note: All products are 'FOR RESEARCH USE ONLY. NOT FOR USE IN DIAGNOSTIC OR THERAPEUTIC PROCEDURES'.