

EEA1 Rabbit mAb

Catalog # AP78665

Product Information

| | |
|--------------------------|------------------------|
| Application | WB, ICC |
| Primary Accession | Q15075 |
| Reactivity | Human, Mouse |
| Host | Rabbit |
| Clonality | Monoclonal Antibody |
| Calculated MW | 162466 |

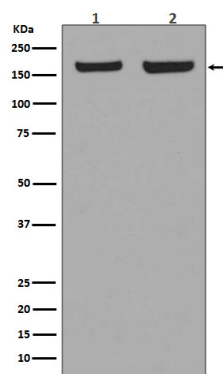
Additional Information

| | |
|--------------------|--|
| Gene ID | 8411 |
| Other Names | EEA1 |
| Dilution | WB~~1/500-1/1000 ICC~~N/A |
| Format | 10mM PBS, pH 7.4, 150mM sodium chloride, 0.05% BSA, 0.02% sodium azide and 50% glycerol. |
| Storage | Store at 4°C short term. Aliquot and store at -20°C long term. Avoid freeze/thaw cycles. |

Protein Information

| | |
|--------------------------|--|
| Name | EEA1 |
| Synonyms | ZFYVE2 |
| Function | Binds phospholipid vesicles containing phosphatidylinositol 3-phosphate and participates in endosomal trafficking. |
| Cellular Location | Cytoplasm. Early endosome membrane; Peripheral membrane protein |

Images



Please note: All products are 'FOR RESEARCH USE ONLY. NOT FOR USE IN DIAGNOSTIC OR THERAPEUTIC PROCEDURES'.