

CCR3 Rabbit mAb

Catalog # AP78664

Product Information

Application	WB, IHC-P, IF, ICC
Primary Accession	P51677
Reactivity	Rat, Human, Mouse
Host	Rabbit
Clonality	Monoclonal Antibody
Isotype	IgG
Conjugate	Unconjugated
Immunogen	A synthesized peptide derived from human CCR3
Purification	Affinity Chromatography
Calculated MW	41044

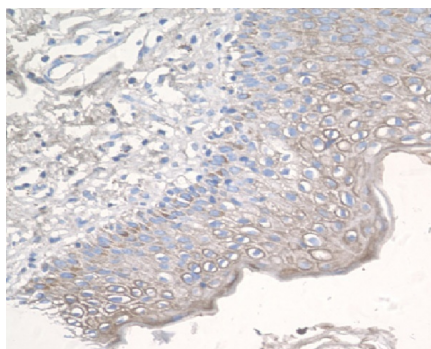
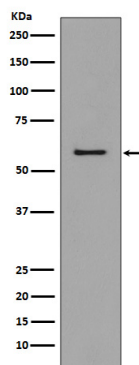
Additional Information

Gene ID	1232
Other Names	CCR3
Dilution	WB~~1/500-1/1000 IHC-P~~N/A IF~~1:50~200 ICC~~N/A
Format	Liquid in 10mM PBS, pH 7.4, 150mM sodium chloride, 0.05% BSA, 0.02% sodium azide and 50% glycerol.
Storage	Store at 4°C short term. Aliquot and store at -20°C long term. Avoid freeze/thaw cycles.

Protein Information

Name	CCR3
Synonyms	CMKBR3
Function	Receptor for C-C type chemokine. Binds and responds to a variety of chemokines, including CCL11, CCL26, CCL7, CCL13, RANTES(CCL5) and CCL15 (PubMed: 7622448 , PubMed: 8642344 , PubMed: 8676064). Subsequently transduces a signal by increasing the intracellular calcium ions level (PubMed: 8676064). In addition acts as a possible functional receptor for NARS1 (PubMed: 30171954).
Cellular Location	Cell membrane; Multi-pass membrane protein
Tissue Location	In eosinophils as well as trace amounts in neutrophils and monocytes.

Images



Please note: All products are 'FOR RESEARCH USE ONLY. NOT FOR USE IN DIAGNOSTIC OR THERAPEUTIC PROCEDURES'.