

KDEL Rabbit mAb

Catalog # AP78655

Product Information

Application	WB, IHC-P, IF, FC, ICC
Primary Accession	P24390
Reactivity	Rat, Human, Mouse
Host	Rabbit
Clonality	Monoclonal Antibody
Isotype	IgG
Conjugate	Unconjugated
Immunogen	A synthesized peptide derived from human KDEL
Purification	Affinity Chromatography
Calculated MW	24542

Additional Information

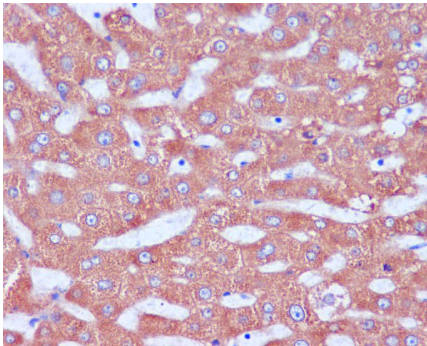
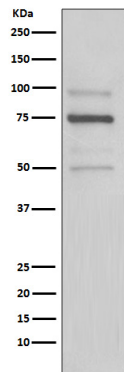
Gene ID	10945
Other Names	KDELRL1
Dilution	WB~~1/500-1/1000 IHC-P~~N/A IF~~1:50~200 FC~~1:10~50 ICC~~N/A
Format	Liquid in 10mM PBS, pH 7.4, 150mM sodium chloride, 0.05% BSA, 0.02% sodium azide and 50% glycerol.
Storage	Store at 4°C short term. Aliquot and store at -20°C long term. Avoid freeze/thaw cycles.

Protein Information

Name	KDELRL1
Synonyms	ERD2.1
Function	Receptor for the C-terminal sequence motif K-D-E-L that is present on endoplasmic reticulum resident proteins and that mediates their recycling from the Golgi back to the endoplasmic reticulum.
Cellular Location	Golgi apparatus membrane; Multi-pass membrane protein {ECO:0000250 UniProtKB:P33946}. Cytoplasmic vesicle, COPI-coated vesicle membrane; Multi-pass membrane protein {ECO:0000250 UniProtKB:P33946}. Endoplasmic reticulum membrane; Multi-pass membrane protein {ECO:0000250 UniProtKB:P33946}. Endoplasmic reticulum-Golgi intermediate compartment membrane {ECO:0000250 UniProtKB:P33946}; Multi-pass membrane protein {ECO:0000250 UniProtKB:P33946} Note=Localized in the Golgi in the absence of bound proteins with the sequence motif K-D-E-L.

Trafficks back to the endoplasmic reticulum together with cargo proteins containing the sequence motif K-D-E-L

Images



Please note: All products are 'FOR RESEARCH USE ONLY. NOT FOR USE IN DIAGNOSTIC OR THERAPEUTIC PROCEDURES'.