

LYVE1 Rabbit mAb

Catalog # AP78617

Product Information

Application	WB
Primary Accession	Q9Y5Y7
Reactivity	Rat, Human, Mouse
Host	Rabbit
Clonality	Monoclonal Antibody
Isotype	IgG
Conjugate	Unconjugated
Immunogen	A synthesized peptide derived from human LYVE1
Purification	Affinity Chromatography
Calculated MW	35213

Additional Information

Gene ID	10894
Other Names	LYVE1
Dilution	WB~~1/500-1/1000
Format	Liquid in 10mM PBS, pH 7.4, 150mM sodium chloride, 0.05% BSA, 0.02% sodium azide and 50% glycerol.
Storage	Store at 4°C short term. Aliquot and store at -20°C long term. Avoid freeze/thaw cycles.

Protein Information

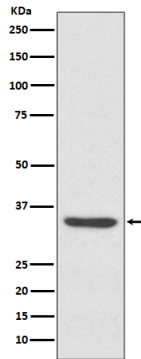
Name	LYVE1
Synonyms	CRSBP1, HAR, XLKD1
Function	Ligand-specific transporter trafficking between intracellular organelles (TGN) and the plasma membrane. Plays a role in autocrine regulation of cell growth mediated by growth regulators containing cell surface retention sequence binding (CRS). May act as a hyaluronan (HA) transporter, either mediating its uptake for catabolism within lymphatic endothelial cells themselves, or its transport into the lumen of afferent lymphatic vessels for subsequent re-uptake and degradation in lymph nodes (PubMed: 10037799). Binds to pericellular hyaluronan matrices deposited on the surface of leukocytes and facilitates cell adhesion and migration through lymphatic endothelium (PubMed: 26823460).
Cellular Location	Cell membrane; Single-pass type I membrane protein. Note=Localized to the

plasma membrane and in vesicles near extranuclear membranes which may represent trans- Golgi network (TGN) and endosomes/prelysosomal compartments. Undergoes ligand-dependent internalization and recycling at the cell surface Localizes at cell-cell junctions

Tissue Location

Mainly expressed in endothelial cells lining lymphatic vessels.

Images



Please note: All products are 'FOR RESEARCH USE ONLY. NOT FOR USE IN DIAGNOSTIC OR THERAPEUTIC PROCEDURES'.