

Phospho-Tau (Thr231) Rabbit mAb

Catalog # AP78610

Product Information

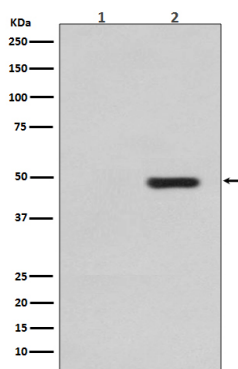
Application	WB, IHC-P, IP
Primary Accession	P10636
Reactivity	Human, Mouse, Rat
Host	Rabbit
Clonality	Monoclonal Antibody
Isotype	IgG
Conjugate	Unconjugated
Immunogen	A synthesized peptide derived from human Phospho-Tau (T231)
Purification	Affinity Chromatography
Calculated MW	79 KDa

Additional Information

Other Names	MAPT
Dilution	WB~~1/500-1/1000 IHC-P~~N/A IP~~N/A
Format	Liquid in 10mM PBS, pH 7.4, 150mM sodium chloride, 0.05% BSA, 0.02% sodium azide and 50% glycerol.
Storage	Store at 4°C short term. Aliquot and store at -20°C long term. Avoid freeze/thaw cycles.

Protein Information

Images



Western blot analysis of Phospho-Tau (T231) in (1) SH-SY5Y lysates; (2) SH-SY5Y lysates, treated with sorbitol using Phospho-Tau (Thr231) antibody.

Please note: All products are 'FOR RESEARCH USE ONLY. NOT FOR USE IN DIAGNOSTIC OR THERAPEUTIC PROCEDURES'.