

Phospho-CRK (Tyr221) Rabbit mAb

Catalog # AP78556

Product Information

Application	WB, IF, ICC
Primary Accession	P46108
Reactivity	Human
Host	Rabbit
Clonality	Monoclonal Antibody
Isotype	IgG
Conjugate	Unconjugated
Immunogen	A synthesized peptide derived from human Phospho-CrkII (Tyr221)
Purification	Affinity Chromatography
Calculated MW	33831

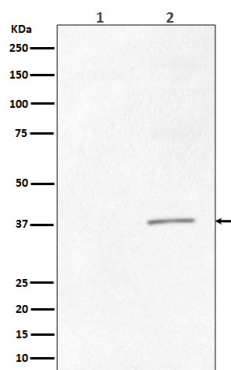
Additional Information

Gene ID	1398
Other Names	CRK
Dilution	WB~~1/500-1/1000 IF~~1:50~200 ICC~~N/A
Format	Liquid in 10mM PBS, pH 7.4, 150mM sodium chloride, 0.05% BSA, 0.02% sodium azide and 50% glycerol.
Storage	Store at 4°C short term. Aliquot and store at -20°C long term. Avoid freeze/thaw cycles.

Protein Information

Name	CRK
Function	Involved in cell branching and adhesion mediated by BCAR1- CRK-RAPGEF1 signaling and activation of RAP1.
Cellular Location	Cytoplasm. Cell membrane. Note=Translocated to the plasma membrane upon cell adhesion.

Images



Please note: All products are 'FOR RESEARCH USE ONLY. NOT FOR USE IN DIAGNOSTIC OR THERAPEUTIC PROCEDURES'.