

Phospho-NF-KB p65 (Ser529) Rabbit mAb

Catalog # AP78535

Product Information

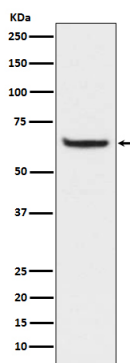
Application	WB, FC, IP
Primary Accession	Q04206
Reactivity	Human
Host	Rabbit
Clonality	Monoclonal Antibody
Isotype	IgG
Conjugate	Unconjugated
Immunogen	A synthesized peptide derived from human NF- κ B p65
Purification	Affinity Chromatography
Calculated MW	60 KDa

Additional Information

Other Names	RELA
Dilution	WB~~1/500-1/1000 FC~~1:10~50 IP~~N/A
Format	Liquid in 10mM PBS, pH 7.4, 150mM sodium chloride, 0.05% BSA, 0.02% sodium azide and 50% glycerol.
Storage	Store at 4°C short term. Aliquot and store at -20°C long term. Avoid freeze/thaw cycles.

Protein Information

Images



Please note: All products are 'FOR RESEARCH USE ONLY. NOT FOR USE IN DIAGNOSTIC OR THERAPEUTIC PROCEDURES'.