

Phospho-LAT (Tyr191) Rabbit mAb

Catalog # AP78531

Product Information

Application	WB, IHC-P, IF, ICC, IP
Primary Accession	O43561
Reactivity	Rat, Human, Mouse
Host	Rabbit
Clonality	Monoclonal Antibody
Isotype	IgG
Conjugate	Unconjugated
Immunogen	A synthesized peptide derived from human Phospho-LAT (Y191)
Purification	Affinity Chromatography
Calculated MW	27930

Additional Information

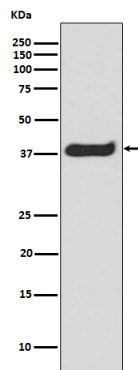
Gene ID	27040
Other Names	LAT
Dilution	WB~~1/500-1/1000 IHC-P~~N/A IF~~1:50~200 ICC~~N/A IP~~N/A
Format	Liquid in 10mM PBS, pH 7.4, 150mM sodium chloride, 0.05% BSA, 0.02% sodium azide and 50% glycerol.
Storage	Store at 4°C short term. Aliquot and store at -20°C long term. Avoid freeze/thaw cycles.

Protein Information

Name	LAT
Function	Required for TCR (T-cell antigen receptor)- and pre-TCR- mediated signaling, both in mature T-cells and during their development (PubMed: 23514740 , PubMed: 25907557). Involved in FCGR3 (low affinity immunoglobulin gamma Fc region receptor III)-mediated signaling in natural killer cells and FCER1 (high affinity immunoglobulin epsilon receptor)-mediated signaling in mast cells. Couples activation of these receptors and their associated kinases with distal intracellular events such as mobilization of intracellular calcium stores, PKC activation, MAPK activation or cytoskeletal reorganization through the recruitment of PLCG1, GRB2, GRAP2, and other signaling molecules.
Cellular Location	Cell membrane; Single-pass type III membrane protein. Note=Present in lipid rafts
Tissue Location	Expressed in thymus, T-cells, NK cells, mast cells and, at lower levels, in

spleen. Present in T-cells but not B-cells (at protein level).

Images



Please note: All products are 'FOR RESEARCH USE ONLY. NOT FOR USE IN DIAGNOSTIC OR THERAPEUTIC PROCEDURES'.