

Cytokeratin 12 Rabbit mAb

Catalog # AP78510

Product Information

Application	WB, IHC-P, IF, ICC
Primary Accession	Q99456
Reactivity	Rat, Human, Mouse
Host	Rabbit
Clonality	Monoclonal Antibody
Isotype	IgG
Conjugate	Unconjugated
Immunogen	A synthesized peptide derived from human Cytokeratin 12
Purification	Affinity Purified
Calculated MW	53511

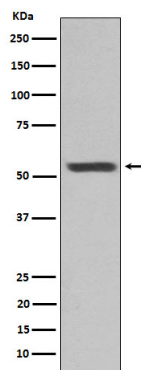
Additional Information

Gene ID	3859
Other Names	KRT12
Dilution	WB~~1/500-1/1000 IHC-P~~N/A IF~~1:50~200 ICC~~N/A
Format	Liquid in 10mM PBS, pH 7.4, 150mM sodium chloride, 0.05% BSA, 0.02% sodium azide and 50% glycerol.
Storage	Store at 4°C short term. Aliquot and store at -20°C long term. Avoid freeze/thaw cycles.

Protein Information

Name	KRT12
Function	Involved in corneal epithelium organization, integrity and corneal keratin expression.
Tissue Location	Expressed in the corneal epithelium (at protein level).

Images



Please note: All products are 'FOR RESEARCH USE ONLY. NOT FOR USE IN DIAGNOSTIC OR THERAPEUTIC PROCEDURES'.