

ATP4B Rabbit mAb

Catalog # AP78494

Product Information

Application	WB
Primary Accession	P51164
Reactivity	Human
Host	Rabbit
Clonality	Monoclonal Antibody
Isotype	IgG
Conjugate	Unconjugated
Immunogen	A synthesized peptide derived from human ATP4B
Purification	Affinity Purified
Calculated MW	33367

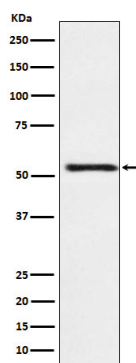
Additional Information

Gene ID	496
Other Names	ATP4B
Dilution	WB~~1/500-1/1000
Format	Liquid in 10mM PBS, pH 7.4, 150mM sodium chloride, 0.05% BSA, 0.02% sodium azide and 50% glycerol.
Storage	Store at 4°C short term. Aliquot and store at -20°C long term. Avoid freeze/thaw cycles.

Protein Information

Name	ATP4B (HGNC:820)
Function	The beta subunit of the gastric H(+)/K(+) ATPase pump which transports H(+) ions in exchange for K(+) ions across the apical membrane of parietal cells. Plays a structural and regulatory role in the assembly and membrane targeting of a functionally active pump (By similarity). Within a transport cycle, the transfer of a H(+) ion across the membrane is coupled to ATP hydrolysis and is associated with a transient phosphorylation of the alpha subunit that shifts the pump conformation from inward-facing (E1) to outward-facing state (E2). Interacts with the phosphorylation domain of the alpha subunit and functions as a ratchet, stabilizing the lumenal-open E2 conformation and preventing the reverse reaction of the transport cycle (By similarity).
Cellular Location	Apical cell membrane {ECO:0000250 UniProtKB:P20648}; Single-pass type II membrane protein. Cell membrane {ECO:0000250 UniProtKB:P18597}; Single- pass type II membrane protein. Note=Localized in the apical

Images



Please note: All products are 'FOR RESEARCH USE ONLY. NOT FOR USE IN DIAGNOSTIC OR THERAPEUTIC PROCEDURES'.