

Connexin 32 Rabbit mAb

Catalog # AP78490

Product Information

Application	WB, IHC-P, FC
Primary Accession	P08034
Reactivity	Human
Host	Rabbit
Clonality	Monoclonal Antibody
Isotype	IgG
Conjugate	Unconjugated
Immunogen	A synthesized peptide derived from human GJB1
Purification	Affinity Purified
Calculated MW	32025

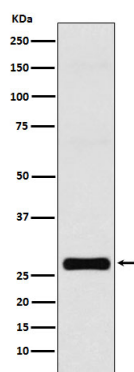
Additional Information

Gene ID	2705
Other Names	GJB1
Dilution	WB~~1/500-1/1000 IHC-P~~N/A FC~~1:10~50
Format	Liquid in 10mM PBS, pH 7.4, 150mM sodium chloride, 0.05% BSA, 0.02% sodium azide and 50% glycerol.
Storage	Store at 4°C short term. Aliquot and store at -20°C long term. Avoid freeze/thaw cycles.

Protein Information

Name	GJB1
Synonyms	CX32
Function	One gap junction consists of a cluster of closely packed pairs of transmembrane channels, the connexons, through which materials of low MW diffuse from one cell to a neighboring cell.
Cellular Location	Cell membrane; Multi-pass membrane protein. Cell junction, gap junction

Images



Please note: All products are 'FOR RESEARCH USE ONLY. NOT FOR USE IN DIAGNOSTIC OR THERAPEUTIC PROCEDURES'.