

ALDH1A3 Antibody (N-term)

Purified Rabbit Polyclonal Antibody (Pab)

Catalog # AP7847a

Product Information

Application	WB, IHC-P, E
Primary Accession	P47895
Reactivity	Human, Mouse
Host	Rabbit
Clonality	Polyclonal
Isotype	Rabbit IgG
Antigen Region	24-52

Additional Information

Other Names	Aldehyde dehydrogenase family 1 member A3, Aldehyde dehydrogenase 6, Retinaldehyde dehydrogenase 3, RALDH-3, RaLDH3, ALDH1A3, ALDH6
Target/Specificity	This ALDH1A3 antibody is generated from rabbits immunized with a KLH conjugated synthetic peptide between 24-51 amino acids from the N-terminal region of human ALDH1A3.
Dilution	WB~~1:1000 IHC-P~~1:100~500 E~~Use at an assay dependent concentration.
Format	Purified polyclonal antibody supplied in PBS with 0.05% (V/V) Proclin 300. This antibody is prepared by Saturated Ammonium Sulfate (SAS) precipitation followed by dialysis against PBS.
Storage	Maintain refrigerated at 2-8°C for up to 2 weeks. For long term storage store at -20°C in small aliquots to prevent freeze-thaw cycles.
Precautions	ALDH1A3 Antibody (N-term) is for research use only and not for use in diagnostic or therapeutic procedures.

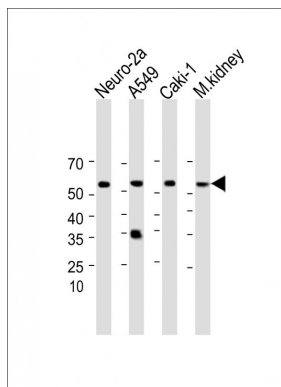
Protein Information

Background

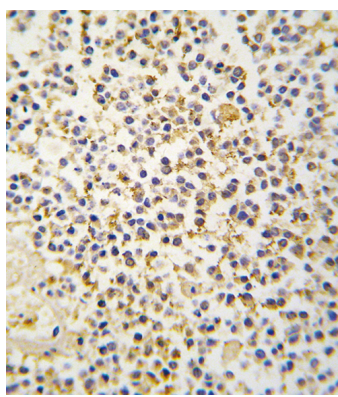
Aldehyde dehydrogenase isozymes are thought to play a major role in the detoxification of aldehydes generated by alcohol metabolism and lipid peroxidation. The enzyme ALDH1A3 uses retinal as a substrate, either in a free or cellular retinol-binding protein form.

References

Images



All lanes: Anti-ALDH1A3 Antibody (N-term) at 1:2000 dilution
Lane 1: Neuro-2a whole cell lysate
Lane 2: A549 whole cell lysate
Lane 3: Caki-1 whole cell lysate
Lane 4: Mouse kidney lysate
Lysates/proteins at 20 µg per lane.
Secondary: Goat Anti-Rabbit IgG, (H+L), Peroxidase conjugated (ASP1615) at 1/15000 dilution. Observed band size: 55 KDa
Blocking/Dilution buffer: 5% NFDM/TBST.



Formalin-fixed and paraffin-embedded human kidney tissue reacted with ALDH1A3 antibody (N-term), which was peroxidase-conjugated to the secondary antibody, followed by DAB staining. This data demonstrates the use of this antibody for immunohistochemistry; clinical relevance has not been evaluated.

Citations

- [ALDH1A3 Coordinates Metabolism With Gene Regulation in Pulmonary Arterial Hypertension](#)
- [Androgen Receptor signaling promotes the neural progenitor cell pool in the developing cortex](#)
- [The RNA-binding protein MEX3A is a prognostic factor and regulator of resistance to gemcitabine in pancreatic ductal adenocarcinoma](#)
- [Aldehyde dehydrogenases contribute to skeletal muscle homeostasis in healthy, aging, and Duchenne muscular dystrophy patients](#)
- [Cancer Stem Cell Biomarkers in EGFR-Mutation-Positive Non-Small-Cell Lung Cancer](#)
- [A Sox2-Sox9 signalling axis maintains human breast luminal progenitor and breast cancer stem cells](#)
- [Cellular level classification of breast cancer through proteomic markers using nanochannel array sensors](#)
- [Essential role of aldehyde dehydrogenase 1A3 for the maintenance of non-small cell lung cancer stem cells is associated with the STAT3 pathway](#)
- [Down-regulation of ALDH1A3, CD44 or MDR1 sensitizes resistant cancer cells to FAK autophosphorylation inhibitor Y15](#)
- [Importance of ALDH1A enzymes in determining human testicular retinoic acid concentrations](#)
- [ALDH Enzyme Expression Is Independent of the Spermatogenic Cycle and Their Inhibition Causes Misregulation of Murine Spermatogenic Processes](#)
- [ALDH1A3 is epigenetically regulated during melanocyte transformation and is a target for melanoma treatment](#)
- [Therapeutic potential of the metabolic modulator phenformin in targeting the stem cell compartment in melanoma](#)
- [Induced Expression of Cancer Stem Cell Markers ALDH1A3 and Sox-2 in Hierarchical Reconstitution of Apoptosis-resistant Human Breast Cancer Cells](#)
- [Aldh1 Expression and Activity Increase During Tumor Evolution in Sarcoma Cancer Stem Cell Populations](#)