

PDE4B Rabbit mAb

Catalog # AP78479

Product Information

Application	WB, FC
Primary Accession	Q07343
Reactivity	Human, Mouse
Host	Rabbit
Clonality	Monoclonal Antibody
Isotype	IgG
Conjugate	Unconjugated
Immunogen	A synthesized peptide derived from human PDE4B
Purification	Affinity Purified
Calculated MW	83343

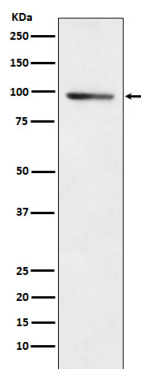
Additional Information

Gene ID	5142
Other Names	PDE4B
Dilution	WB~~1/500-1/1000 FC~~1:10~50
Format	Liquid in 10mM PBS, pH 7.4, 150mM sodium chloride, 0.05% BSA, 0.02% sodium azide and 50% glycerol.
Storage	Store at 4°C short term. Aliquot and store at -20°C long term. Avoid freeze/thaw cycles.

Protein Information

Name	PDE4B (HGNC:8781)
Synonyms	DPDE4
Function	Hydrolyzes the second messenger cAMP, which is a key regulator of many important physiological processes (PubMed: 15260978). May be involved in mediating central nervous system effects of therapeutic agents ranging from antidepressants to antiasthmatic and anti-inflammatory agents.
Cellular Location	[Isoform PDE4B5]: Cytoplasm. Cell membrane
Tissue Location	Expressed in brain, heart, lung and skeletal muscle (PubMed:17519386). Expressed in white blood cells (PubMed:8392015)

Images



Please note: All products are 'FOR RESEARCH USE ONLY. NOT FOR USE IN DIAGNOSTIC OR THERAPEUTIC PROCEDURES'.