

# LGI1 Rabbit mAb

Catalog # AP78449

## Product Information

<b>Application</b>	WB, IHC-P, IP
<b>Primary Accession</b>	<a href="#">O95970</a>
<b>Reactivity</b>	Rat, Human, Mouse
<b>Host</b>	Rabbit
<b>Clonality</b>	Monoclonal Antibody
<b>Isotype</b>	IgG
<b>Conjugate</b>	Unconjugated
<b>Immunogen</b>	A synthesized peptide derived from human Lgi1
<b>Purification</b>	Affinity Purified
<b>Calculated MW</b>	63818

## Additional Information

<b>Gene ID</b>	9211
<b>Other Names</b>	LGI1
<b>Dilution</b>	WB~~1/500-1/1000 IHC-P~~N/A IP~~N/A
<b>Format</b>	Liquid in 10mM PBS, pH 7.4, 150mM sodium chloride, 0.05% BSA, 0.02% sodium azide and 50% glycerol.
<b>Storage</b>	Store at 4°C short term. Aliquot and store at -20°C long term. Avoid freeze/thaw cycles.

## Protein Information

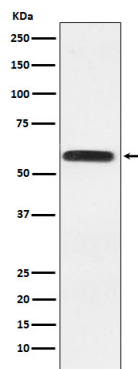
<b>Name</b>	LGI1
<b>Synonyms</b>	EPT
<b>Function</b>	Regulates voltage-gated potassium channels assembled from KCNA1, KCNA4 and KCNAB1. It slows down channel inactivation by precluding channel closure mediated by the KCNAB1 subunit. Ligand for ADAM22 that positively regulates synaptic transmission mediated by AMPA-type glutamate receptors (By similarity). Plays a role in suppressing the production of MMP1/3 through the phosphatidylinositol 3-kinase/ERK pathway. May play a role in the control of neuroblastoma cell survival.
<b>Cellular Location</b>	Secreted. Synapse {ECO:0000250 UniProtKB:Q8K4Y5}. Cytoplasm {ECO:0000250 UniProtKB:Q9JIA1} [Isoform 2]: Endoplasmic reticulum. Cytoplasm {ECO:0000250 UniProtKB:Q9JIA1}

## Tissue Location

Predominantly expressed in neural tissues, especially in brain. Expression is reduced in low-grade brain tumors and significantly reduced or absent in malignant gliomas [Isoform 3]: Abundantly expressed in the occipital cortex and weakly expressed in the hippocampus (at protein level)

## Images

---



Please note: All products are 'FOR RESEARCH USE ONLY. NOT FOR USE IN DIAGNOSTIC OR THERAPEUTIC PROCEDURES'.