

Kir2.1 Rabbit mAb

Catalog # AP78441

Product Information

Application	WB, IHC-P, IF, ICC
Primary Accession	P63252
Reactivity	Rat, Human, Mouse
Host	Rabbit
Clonality	Monoclonal Antibody
Isotype	IgG
Conjugate	Unconjugated
Immunogen	A synthesized peptide derived from human Kir2.1
Purification	Affinity Purified
Calculated MW	48288

Additional Information

Gene ID	3759
Other Names	KCNJ2
Dilution	WB~~1/500-1/1000 IHC-P~~N/A IF~~1:50~200 ICC~~N/A
Format	Liquid in 10mM PBS, pH 7.4, 150mM sodium chloride, 0.05% BSA, 0.02% sodium azide and 50% glycerol.
Storage	Store at 4°C short term. Aliquot and store at -20°C long term. Avoid freeze/thaw cycles.

Protein Information

Name	KCNJ2
Synonyms	IRK1
Function	Inward rectifier potassium channels are characterized by a greater tendency to allow potassium to flow into the cell rather than out of it (PubMed: 36149965 , PubMed: 7590287 , PubMed: 9490857). Their voltage dependence is regulated by the concentration of extracellular potassium; as external potassium is raised, the voltage range of the channel opening shifts to more positive voltages (PubMed: 7590287 , PubMed: 7696590). The inward rectification is mainly due to the blockage of outward current by internal magnesium (PubMed: 9490857). Can be blocked by extracellular barium or cesium (PubMed: 7590287 , PubMed: 7696590). Probably participates in establishing action potential waveform and excitability of neuronal and muscle tissues (PubMed: 7590287 , PubMed: 7696590 , PubMed: 7840300).

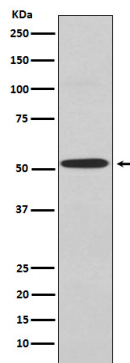
Cellular Location

Cell membrane; Multi-pass membrane protein Cell membrane, sarcolemma, T-tubule {ECO:0000250|UniProtKB:Q64273}

Tissue Location

Heart, brain, placenta, lung, skeletal muscle, and kidney. Diffusely distributed throughout the brain

Images



Please note: All products are 'FOR RESEARCH USE ONLY. NOT FOR USE IN DIAGNOSTIC OR THERAPEUTIC PROCEDURES'.