

DOK1 Rabbit mAb

Catalog # AP78440

Product Information

Application	WB, IF, ICC
Primary Accession	Q99704
Reactivity	Rat, Human, Mouse
Host	Rabbit
Clonality	Monoclonal Antibody
Isotype	IgG
Conjugate	Unconjugated
Immunogen	A synthesized peptide derived from human DOK1
Purification	Affinity Purified
Calculated MW	52392

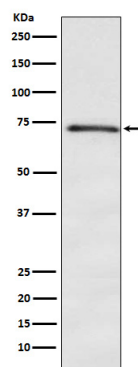
Additional Information

Gene ID	1796
Other Names	DOK1
Dilution	WB~~1/500-1/1000 IF~~1:50~200 ICC~~N/A
Format	Liquid in 10mM PBS, pH 7.4, 150mM sodium chloride, 0.05% BSA, 0.02% sodium azide and 50% glycerol.
Storage	Store at 4°C short term. Aliquot and store at -20°C long term. Avoid freeze/thaw cycles.

Protein Information

Name	DOK1
Function	DOK proteins are enzymatically inert adaptor or scaffolding proteins. They provide a docking platform for the assembly of multimolecular signaling complexes. DOK1 appears to be a negative regulator of the insulin signaling pathway. Modulates integrin activation by competing with talin for the same binding site on ITGB3.
Cellular Location	[Isoform 1]: Cytoplasm. Nucleus.
Tissue Location	Expressed in pancreas, heart, leukocyte and spleen. Expressed in both resting and activated peripheral blood T-cells Expressed in breast cancer.

Images



Please note: All products are 'FOR RESEARCH USE ONLY. NOT FOR USE IN DIAGNOSTIC OR THERAPEUTIC PROCEDURES'.