

LCAT Rabbit mAb

Catalog # AP78438

Product Information

Application	WB, IHC-P, IF, ICC, IP
Primary Accession	P04180
Reactivity	Rat, Human, Mouse
Host	Rabbit
Clonality	Monoclonal Antibody
Isotype	IgG
Conjugate	Unconjugated
Immunogen	A synthesized peptide derived from human LCAT
Purification	Affinity Purified
Calculated MW	49578

Additional Information

Gene ID	3931
Other Names	LCAT
Dilution	WB~~1/500-1/1000 IHC-P~~N/A IF~~1:50~200 ICC~~N/A IP~~N/A
Format	Liquid in 10mM PBS, pH 7.4, 150mM sodium chloride, 0.05% BSA, 0.02% sodium azide and 50% glycerol.
Storage	Store at 4°C short term. Aliquot and store at -20°C long term. Avoid freeze/thaw cycles.

Protein Information

Name	LCAT
Function	Central enzyme in the extracellular metabolism of plasma lipoproteins. Synthesized mainly in the liver and secreted into plasma where it converts cholesterol and phosphatidylcholines (lecithins) to cholesteryl esters and lysophosphatidylcholines on the surface of high and low density lipoproteins (HDLs and LDLs) (PubMed: 10329423 , PubMed: 19065001 , PubMed: 26195816). The cholesterol ester is then transported back to the liver. Has a preference for plasma 16:0-18:2 or 18:0-18:2 phosphatidylcholines (PubMed: 8820107). Also produced in the brain by primary astrocytes, and esterifies free cholesterol on nascent APOE-containing lipoproteins secreted from glia and influences cerebral spinal fluid (CSF) APOE- and APOA1 levels. Together with APOE and the cholesterol transporter ABCA1, plays a key role in the maturation of glial-derived, nascent lipoproteins. Required for remodeling high- density lipoprotein particles into their spherical forms (PubMed: 10722751). Catalyzes the hydrolysis of 1-O-alkyl-2-acetyl-sn-

glycero-3-phosphocholine (platelet-activating factor or PAF) to 1-O-alkyl-sn-glycero-3-phosphocholine (lyso-PAF) (PubMed:[8016111](#)). Also catalyzes the transfer of the acetate group from PAF to 1-hexadecanoyl-sn-glycero-3-phosphocholine forming lyso-PAF (PubMed:[8016111](#)). Catalyzes the esterification of (24S)-hydroxycholesterol (24(S)OH-C), also known as cerebrosterol to produce 24(S)OH-C monoesters (PubMed:[24620755](#)).

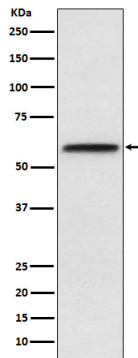
Cellular Location

Secreted. Note=Secreted into blood plasma (PubMed:10222237, PubMed:3458198, PubMed:8820107) Produced in astrocytes and secreted into cerebral spinal fluid (CSF) (PubMed:10222237).

Tissue Location

Detected in blood plasma (PubMed:10222237, PubMed:3458198, PubMed:8820107). Detected in cerebral spinal fluid (at protein level) (PubMed:10222237). Detected in liver (PubMed:3458198, PubMed:3797244). Expressed mainly in brain, liver and testes

Images



Please note: All products are 'FOR RESEARCH USE ONLY. NOT FOR USE IN DIAGNOSTIC OR THERAPEUTIC PROCEDURES'.