

FKBP38 Rabbit mAb

Catalog # AP78410

Product Information

Application	WB, IF, FC, ICC
Primary Accession	Q14318
Reactivity	Human
Host	Rabbit
Clonality	Monoclonal Antibody
Isotype	IgG
Conjugate	Unconjugated
Immunogen	A synthesized peptide derived from human FKBP38
Purification	Affinity Purified
Calculated MW	44562

Additional Information

Gene ID	23770
Other Names	FKBP8
Dilution	WB~~1/500-1/1000 IF~~1:50~200 FC~~1:10~50 ICC~~N/A
Format	Liquid in 10mM PBS, pH 7.4, 150mM sodium chloride, 0.05% BSA, 0.02% sodium azide and 50% glycerol.
Storage	Store at 4°C short term. Aliquot and store at -20°C long term. Avoid freeze/thaw cycles.

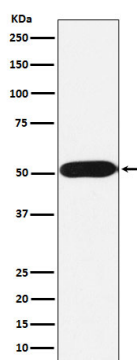
Protein Information

Name	FKBP8
Synonyms	FKBP38
Function	Constitutively inactive PPIase, which becomes active when bound to calmodulin and calcium. Seems to act as a chaperone for BCL2, targets it to the mitochondria and modulates its phosphorylation state. The BCL2/FKBP8/calmodulin/calcium complex probably interferes with the binding of BCL2 to its targets. The active form of FKBP8 may therefore play a role in the regulation of apoptosis. Involved in the inhibition of viral infection by influenza A viruses (IAV) (PubMed: 28169297).
Cellular Location	Mitochondrion. Mitochondrion membrane; Single-pass membrane protein; Cytoplasmic side [Isoform 3]; Mitochondrion membrane; Single-pass membrane protein; Cytoplasmic side

Tissue Location

Widely expressed. Highest levels seen in the brain. Highly abundant in the retina.

Images



Please note: All products are 'FOR RESEARCH USE ONLY. NOT FOR USE IN DIAGNOSTIC OR THERAPEUTIC PROCEDURES'.