

# SERCA1 ATPase Rabbit mAb

Catalog # AP78397

## Product Information

Application	WB
Primary Accession	<a href="#">O14983</a>
Reactivity	Rat, Human, Mouse
Host	Rabbit
Clonality	Monoclonal Antibody
Isotype	IgG
Conjugate	Unconjugated
Immunogen	A synthesized peptide derived from human SERCA1 ATPase
Purification	Affinity Purified
Calculated MW	110252

## Additional Information

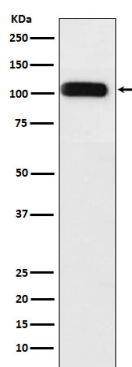
Gene ID	487
Other Names	ATP2A1
Dilution	WB~~1/500-1/1000
Format	Liquid in 10mM PBS, pH 7.4, 150mM sodium chloride, 0.05% BSA, 0.02% sodium azide and 50% glycerol.
Storage	Store at 4°C short term. Aliquot and store at -20°C long term. Avoid freeze/thaw cycles.

## Protein Information

Name	ATP2A1 ( <a href="#">HGNC:811</a> )
Function	Key regulator of striated muscle performance by acting as the major Ca(2+) ATPase responsible for the reuptake of cytosolic Ca(2+) into the sarcoplasmic reticulum. Catalyzes the hydrolysis of ATP coupled with the translocation of calcium from the cytosol to the sarcoplasmic reticulum lumen (By similarity). Contributes to calcium sequestration involved in muscular excitation/contraction (PubMed: <a href="#">10914677</a> ).
Cellular Location	Endoplasmic reticulum membrane {ECO:0000250 UniProtKB:P04191}; Multi-pass membrane protein {ECO:0000250 UniProtKB:P04191}; Sarcoplasmic reticulum membrane {ECO:0000250 UniProtKB:P04191}; Multi-pass membrane protein {ECO:0000250 UniProtKB:P04191}
Tissue Location	Skeletal muscle, fast twitch muscle (type II) fibers.

## Images

---



Please note: All products are 'FOR RESEARCH USE ONLY. NOT FOR USE IN DIAGNOSTIC OR THERAPEUTIC PROCEDURES'.