

# CRMP4 Rabbit mAb

Catalog # AP78394

## Product Information

---

<b>Application</b>	WB, IF, ICC, IP
<b>Primary Accession</b>	<a href="#">Q14195</a>
<b>Reactivity</b>	Rat, Human, Mouse
<b>Host</b>	Rabbit
<b>Clonality</b>	Monoclonal Antibody
<b>Isotype</b>	IgG
<b>Conjugate</b>	Unconjugated
<b>Immunogen</b>	A synthesized peptide derived from human CRMP4
<b>Purification</b>	Affinity Purified
<b>Calculated MW</b>	61963

## Additional Information

---

<b>Gene ID</b>	1809
<b>Other Names</b>	DPYSL3
<b>Dilution</b>	WB~~1/500-1/1000 IF~~1:50~200 ICC~~N/A IP~~N/A
<b>Format</b>	Liquid in 10mM PBS, pH 7.4, 150mM sodium chloride, 0.05% BSA, 0.02% sodium azide and 50% glycerol.
<b>Storage</b>	Store at 4°C short term. Aliquot and store at -20°C long term. Avoid freeze/thaw cycles.

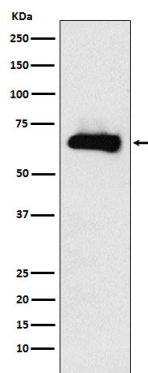
## Protein Information

---

<b>Name</b>	DPYSL3
<b>Synonyms</b>	CRMP4, DRP3, ULIP, ULIP1
<b>Function</b>	Necessary for signaling by class 3 semaphorins and subsequent remodeling of the cytoskeleton. Plays a role in axon guidance, neuronal growth cone collapse and cell migration (By similarity).
<b>Cellular Location</b>	Cytoplasm. Cell projection, growth cone. Note=Colocalizes with synaptic vesicle protein 2 in the central region of the growth cone.
<b>Tissue Location</b>	Mainly expressed in heart and skeletal muscle. Also strongly expressed in fetal brain and spinal cord

## Images

---



Please note: All products are 'FOR RESEARCH USE ONLY. NOT FOR USE IN DIAGNOSTIC OR THERAPEUTIC PROCEDURES'.