

CDC123 Rabbit mAb

Catalog # AP78391

Product Information

Application	WB, FC, IP
Primary Accession	O75794
Reactivity	Rat, Human, Mouse
Host	Rabbit
Clonality	Monoclonal Antibody
Isotype	IgG
Conjugate	Unconjugated
Immunogen	A synthesized peptide derived from human CDC123
Purification	Affinity Purified
Calculated MW	39135

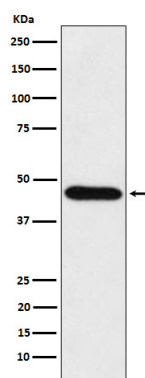
Additional Information

Gene ID	8872
Other Names	CDC123
Dilution	WB~~1/500-1/1000 FC~~1:10~50 IP~~N/A
Format	Liquid in 10mM PBS, pH 7.4, 150mM sodium chloride, 0.05% BSA, 0.02% sodium azide and 50% glycerol.
Storage	Store at 4°C short term. Aliquot and store at -20°C long term. Avoid freeze/thaw cycles.

Protein Information

Name	CDC123
Synonyms	C10orf7, D123
Function	ATP-dependent protein-folding chaperone for the eIF2 complex (PubMed: 35031321 , PubMed: 37507029). Binds to the gamma subunit of the eIF2 complex which allows the subunit to assemble with the alpha and beta subunits (By similarity).
Cellular Location	Cytoplasm {ECO:0000250 UniProtKB:Q62834}.
Tissue Location	Widely expressed. Expressed in spleen, thymus, prostate, testis, ovary, small intestine, colon and leukocytes with the highest expression in testis.

Images



Please note: All products are 'FOR RESEARCH USE ONLY. NOT FOR USE IN DIAGNOSTIC OR THERAPEUTIC PROCEDURES'.