

DP1 Rabbit mAb

Catalog # AP78386

Product Information

Application	WB, FC
Primary Accession	Q14186
Reactivity	Rat, Human, Mouse
Host	Rabbit
Clonality	Monoclonal Antibody
Isotype	IgG
Conjugate	Unconjugated
Immunogen	A synthesized peptide derived from human DP1
Purification	Affinity Purified
Calculated MW	45070

Additional Information

Gene ID	7027
Other Names	TFDP1
Dilution	WB~~1/500-1/1000 FC~~1:10~50
Format	Liquid in 10mM PBS, pH 7.4, 150mM sodium chloride, 0.05% BSA, 0.02% sodium azide and 50% glycerol.
Storage	Store at 4°C short term. Aliquot and store at -20°C long term. Avoid freeze/thaw cycles.

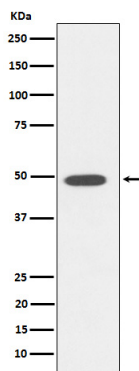
Protein Information

Name	TFDP1
Synonyms	DP1
Function	Can stimulate E2F-dependent transcription. Binds DNA cooperatively with E2F family members through the E2 recognition site, 5'-TTTC[CG]CGC-3', found in the promoter region of a number of genes whose products are involved in cell cycle regulation or in DNA replication (PubMed: 7739537 , PubMed: 8405995). The E2F1:DP complex appears to mediate both cell proliferation and apoptosis. Blocks adipocyte differentiation by repressing CEBPA binding to its target gene promoters (PubMed: 20176812).
Cellular Location	Nucleus {ECO:0000250 UniProtKB:Q08639}. Cytoplasm {ECO:0000250 UniProtKB:Q08639}. Note=Shuttles between the cytoplasm and nucleus and translocates into the nuclear compartment upon heterodimerization with E2F1. {ECO:0000250 UniProtKB:Q08639}

Tissue Location

Highest levels in muscle. Also expressed in brain, placenta, liver and kidney.
Lower levels in lung and pancreas. Not detected in heart

Images



Please note: All products are 'FOR RESEARCH USE ONLY. NOT FOR USE IN DIAGNOSTIC OR THERAPEUTIC PROCEDURES'.