

Cystatin A Rabbit mAb

Catalog # AP78382

Product Information

Application	WB, FC
Primary Accession	P01040
Reactivity	Rat, Human, Mouse
Host	Rabbit
Clonality	Monoclonal Antibody
Isotype	IgG
Conjugate	Unconjugated
Immunogen	A synthesized peptide derived from human Cystatin A
Purification	Affinity Purified
Calculated MW	11006

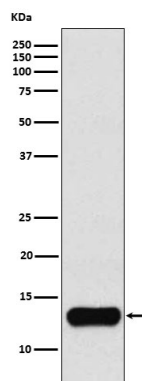
Additional Information

Gene ID	1475
Other Names	CSTA
Dilution	WB~~1/500-1/1000 FC~~1:10~50
Format	Liquid in 10mM PBS, pH 7.4, 150mM sodium chloride, 0.05% BSA, 0.02% sodium azide and 50% glycerol.
Storage	Store at 4°C short term. Aliquot and store at -20°C long term. Avoid freeze/thaw cycles.

Protein Information

Name	CSTA
Synonyms	STF1, STFA
Function	This is an intracellular thiol proteinase inhibitor. Has an important role in desmosome-mediated cell-cell adhesion in the lower levels of the epidermis.
Cellular Location	Cytoplasm.
Tissue Location	Expressed in the skin throughout the epidermis.

Images



Please note: All products are 'FOR RESEARCH USE ONLY. NOT FOR USE IN DIAGNOSTIC OR THERAPEUTIC PROCEDURES'.