

# Hippocalcin Rabbit mAb

Catalog # AP78378

## Product Information

<b>Application</b>	WB
<b>Primary Accession</b>	<a href="#">P84074</a>
<b>Reactivity</b>	Rat, Human, Mouse
<b>Host</b>	Rabbit
<b>Clonality</b>	Monoclonal Antibody
<b>Isotype</b>	IgG
<b>Conjugate</b>	Unconjugated
<b>Immunogen</b>	A synthesized peptide derived from human Hippocalcin
<b>Purification</b>	Affinity Purified
<b>Calculated MW</b>	22427

## Additional Information

<b>Gene ID</b>	3208
<b>Other Names</b>	HPCA
<b>Dilution</b>	WB~~1/500-1/1000
<b>Format</b>	Liquid in 10mM PBS, pH 7.4, 150mM sodium chloride, 0.05% BSA, 0.02% sodium azide and 50% glycerol.
<b>Storage</b>	Store at 4°C short term. Aliquot and store at -20°C long term. Avoid freeze/thaw cycles.

## Protein Information

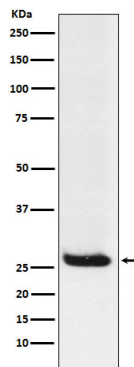
<b>Name</b>	HPCA ( <a href="#">HGNC:5144</a> )
<b>Synonyms</b>	BDR2
<b>Function</b>	Calcium-binding protein that may play a role in the regulation of voltage-dependent calcium channels (PubMed: <a href="#">28398555</a> ). May also play a role in cyclic-nucleotide-mediated signaling through the regulation of adenylate and guanylate cyclases (By similarity).
<b>Cellular Location</b>	Cytoplasm, cytosol {ECO:0000250 UniProtKB:P84076, ECO:0000269 PubMed:28398555}. Membrane {ECO:0000250 UniProtKB:P84076}; Peripheral membrane protein {ECO:0000250 UniProtKB:P84076} Note=Association with membranes is calcium-dependent (By similarity) Enriched in the perinuclear region, probably at the trans Golgi network in response to calcium (PubMed:28398555) {ECO:0000250 UniProtKB:P84076,

**Tissue Location**

Brain specific..

**Images**

---



Please note: All products are 'FOR RESEARCH USE ONLY. NOT FOR USE IN DIAGNOSTIC OR THERAPEUTIC PROCEDURES'.