

SESN1 Rabbit mAb

Catalog # AP78372

Product Information

Application	WB, FC
Primary Accession	Q9Y6P5
Reactivity	Rat, Human, Mouse
Host	Rabbit
Clonality	Monoclonal Antibody
Isotype	IgG
Conjugate	Unconjugated
Immunogen	A synthesized peptide derived from human SESN1
Purification	Affinity Purified
Calculated MW	56557

Additional Information

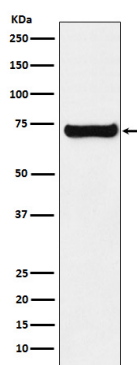
Gene ID	27244
Other Names	SESN1
Dilution	WB~~1/500-1/1000 FC~~1:10~50
Format	Liquid in 10mM PBS, pH 7.4, 150mM sodium chloride, 0.05% BSA, 0.02% sodium azide and 50% glycerol.
Storage	Store at 4°C short term. Aliquot and store at -20°C long term. Avoid freeze/thaw cycles.

Protein Information

Name	SESN1 (HGNC:21595)
Function	Functions as an intracellular leucine sensor that negatively regulates the TORC1 signaling pathway through the GATOR complex. In absence of leucine, binds the GATOR subcomplex GATOR2 and prevents TORC1 signaling. Binding of leucine to SESN2 disrupts its interaction with GATOR2 thereby activating the TORC1 signaling pathway (PubMed: 25263562 , PubMed: 26449471). This stress-inducible metabolic regulator may also play a role in protection against oxidative and genotoxic stresses (By similarity). May positively regulate the transcription by NFE2L2 of genes involved in the response to oxidative stress by facilitating the SQSTM1-mediated autophagic degradation of KEAP1 (PubMed: 23274085). Moreover, may prevent the accumulation of reactive oxygen species (ROS) through the alkylhydroperoxide reductase activity born by the N-terminal domain of the protein (By similarity). Was originally reported to contribute to oxidative stress resistance by reducing PRDX1 (PubMed: 15105503). However, this could not be confirmed (By similarity).

Cellular Location	Nucleus. Cytoplasm
Tissue Location	Widely expressed..

Images



Please note: All products are 'FOR RESEARCH USE ONLY. NOT FOR USE IN DIAGNOSTIC OR THERAPEUTIC PROCEDURES'.