

Pannexin 1 Rabbit mAb

Catalog # AP78334

Product Information

Application	WB, IP
Primary Accession	Q96RD7
Reactivity	Human
Host	Rabbit
Clonality	Monoclonal Antibody
Isotype	IgG
Conjugate	Unconjugated
Immunogen	A synthesized peptide derived from human Pannexin 1
Purification	Affinity Purified
Calculated MW	48050

Additional Information

Gene ID	24145
Other Names	PANX1
Dilution	WB~~1/500-1/1000 IP~~N/A
Format	Liquid in 10mM PBS, pH 7.4, 150mM sodium chloride, 0.05% BSA, 0.02% sodium azide and 50% glycerol.
Storage	Store at 4°C short term. Aliquot and store at -20°C long term. Avoid freeze/thaw cycles.

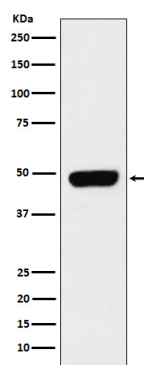
Protein Information

Name	PANX1 (HGNC:8599)
Function	Ion channel involved in a variety of physiological functions such as blood pressure regulation, apoptotic cell clearance and oogenesis (PubMed: 15304325 , PubMed: 16908669 , PubMed: 20829356 , PubMed: 20944749 , PubMed: 30918116). Forms anion-selective channels with relatively low conductance and an order of permeabilities: nitrate>iodide>chloride>>aspartate=glutamate=gluconate (By similarity). Can release ATP upon activation through phosphorylation or cleavage at C-terminus (PubMed: 32238926). May play a role as a Ca(2+)- leak channel to regulate ER Ca(2+) homeostasis (PubMed: 16908669).
Cellular Location	Cell membrane; Multi-pass membrane protein {ECO:0000255 PROSITE-ProRule:PRU00351}. Endoplasmic reticulum membrane; Multi-pass membrane protein {ECO:0000255 PROSITE-ProRule:PRU00351}

Tissue Location

Widely expressed (PubMed:30918116). Highest expression is observed in oocytes and brain (PubMed:30918116). Detected at very low levels in sperm cells (PubMed:30918116)

Images



Please note: All products are 'FOR RESEARCH USE ONLY. NOT FOR USE IN DIAGNOSTIC OR THERAPEUTIC PROCEDURES'.