

NR2E1 Rabbit mAb

Catalog # AP78333

Product Information

Application	WB
Primary Accession	Q9Y466
Reactivity	Rat, Human, Mouse
Host	Rabbit
Clonality	Monoclonal Antibody
Isotype	IgG
Conjugate	Unconjugated
Immunogen	A synthesized peptide derived from human NR2E1
Purification	Affinity Purified
Calculated MW	42589

Additional Information

Gene ID	7101
Other Names	NR2E1
Dilution	WB~~1/500-1/1000
Format	Liquid in 10mM PBS, pH 7.4, 150mM sodium chloride, 0.05% BSA, 0.02% sodium azide and 50% glycerol.
Storage	Store at 4°C short term. Aliquot and store at -20°C long term. Avoid freeze/thaw cycles.

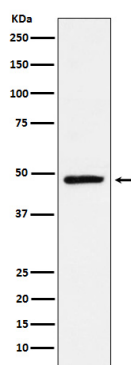
Protein Information

Name	NR2E1
Synonyms	TLX
Function	Orphan receptor that binds DNA as a monomer to hormone response elements (HRE) containing an extended core motif half-site sequence 5'-AAGGTCA-3' in which the 5' flanking nucleotides participate in determining receptor specificity (By similarity). May be required to pattern anterior brain differentiation. Involved in the regulation of retinal development and essential for vision. During retinogenesis, regulates PTEN-Cyclin D expression via binding to the promoter region of PTEN and suppressing its activity (By similarity). May be involved in retinoic acid receptor (RAR) regulation in retinal cells.
Cellular Location	Nucleus {ECO:0000255 PROSITE-ProRule:PRU00407}.

Tissue Location

Brain specific. Present in all brain sections tested, highest levels in the caudate nucleus and hippocampus, weakest levels in the thalamus.

Images



Please note: All products are 'FOR RESEARCH USE ONLY. NOT FOR USE IN DIAGNOSTIC OR THERAPEUTIC PROCEDURES'.