

CSNK1A1 Rabbit mAb

Catalog # AP78327

Product Information

Application	WB
Primary Accession	P48729
Reactivity	Rat, Human, Mouse
Host	Rabbit
Clonality	Monoclonal Antibody
Isotype	IgG
Conjugate	Unconjugated
Immunogen	A synthesized peptide derived from human CSNK1A1
Purification	Affinity Purified
Calculated MW	38915

Additional Information

Gene ID	1452
Other Names	CSNK1A1
Dilution	WB~~1/500-1/1000
Format	Liquid in 10mM PBS, pH 7.4, 150mM sodium chloride, 0.05% BSA, 0.02% sodium azide and 50% glycerol.
Storage	Store at 4°C short term. Aliquot and store at -20°C long term. Avoid freeze/thaw cycles.

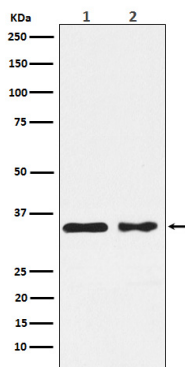
Protein Information

Name	CSNK1A1
Function	Casein kinases are operationally defined by their preferential utilization of acidic proteins such as caseins as substrates (PubMed: 11955436 , PubMed: 1409656 , PubMed: 18305108 , PubMed: 23902688). It can phosphorylate a large number of proteins (PubMed: 11955436 , PubMed: 1409656 , PubMed: 18305108 , PubMed: 23902688). Participates in Wnt signaling (PubMed: 11955436). Phosphorylates CTNNB1 at 'Ser-45' (PubMed: 11955436). May phosphorylate PER1 and PER2 (By similarity). May play a role in segregating chromosomes during mitosis (PubMed: 1409656). May play a role in keratin cytoskeleton disassembly and thereby, it may regulate epithelial cell migration (PubMed: 23902688). Acts as a positive regulator of mTORC1 and mTORC2 signaling in response to nutrients by mediating phosphorylation of DEPTOR inhibitor (PubMed: 22017875 , PubMed: 22017877). Acts as an inhibitor of NLRP3 inflammasome assembly by mediating phosphorylation of NLRP3 (By similarity).

Cellular Location

Cytoplasm. Cytoplasm, cytoskeleton, microtubule organizing center, centrosome. Chromosome, centromere, kinetochore. Nucleus speckle. Cytoplasm, cytoskeleton, cilium basal body {ECO:0000250|UniProtKB:Q8BK63}. Cytoplasm, cytoskeleton, spindle {ECO:0000250|UniProtKB:Q8BK63}. Note=Localizes to the centrosome in interphase cells, and to kinetochore fibers during mitosis. Also recruited to the keratin cytoskeleton (PubMed:23902688)

Images



Please note: All products are 'FOR RESEARCH USE ONLY. NOT FOR USE IN DIAGNOSTIC OR THERAPEUTIC PROCEDURES'.