

Calmegin Rabbit mAb

Catalog # AP78300

Product Information

Application	WB, IHC-P, IF, FC, ICC, IP
Primary Accession	O14967
Reactivity	Rat, Human, Mouse
Host	Rabbit
Clonality	Monoclonal Antibody
Isotype	IgG
Conjugate	Unconjugated
Immunogen	A synthesized peptide derived from human Calmegin
Purification	Affinity Purified
Calculated MW	70039

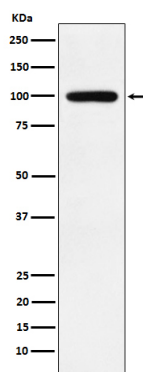
Additional Information

Gene ID	1047
Other Names	CLGN
Dilution	WB~~1/500-1/1000 IHC-P~~N/A IF~~1:50~200 FC~~1:10~50 ICC~~N/A IP~~N/A
Format	Liquid in 10mM PBS, pH 7.4, 150mM sodium chloride, 0.05% BSA, 0.02% sodium azide and 50% glycerol.
Storage	Store at 4°C short term. Aliquot and store at -20°C long term. Avoid freeze/thaw cycles.

Protein Information

Name	CLGN
Function	Functions during spermatogenesis as a chaperone for a range of client proteins that are important for sperm adhesion onto the egg zona pellucida and for subsequent penetration of the zona pellucida. Required for normal sperm migration from the uterus into the oviduct. Required for normal male fertility. Binds calcium ions (By similarity).
Cellular Location	Endoplasmic reticulum membrane; Single-pass type I membrane protein
Tissue Location	Detected in testis (at protein level). Detected in testis.

Images



Please note: All products are 'FOR RESEARCH USE ONLY. NOT FOR USE IN DIAGNOSTIC OR THERAPEUTIC PROCEDURES'.