

KDM4B Rabbit mAb

Catalog # AP78280

Product Information

Application	WB, IHC-P, IF, FC, ICC
Primary Accession	O94953
Reactivity	Rat, Human, Mouse
Host	Rabbit
Clonality	Monoclonal Antibody
Isotype	IgG
Conjugate	Unconjugated
Immunogen	A synthesized peptide derived from human KDM4B / JMJD2B
Purification	Affinity Purified
Calculated MW	121897

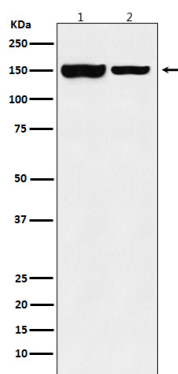
Additional Information

Gene ID	23030
Other Names	KDM4B
Dilution	WB~~1/500-1/1000 IHC-P~~N/A IF~~1:50~200 FC~~1:10~50 ICC~~N/A
Format	Liquid in 10mM PBS, pH 7.4, 150mM sodium chloride, 0.05% BSA, 0.02% sodium azide and 50% glycerol.
Storage	Store at 4°C short term. Aliquot and store at -20°C long term. Avoid freeze/thaw cycles.

Protein Information

Name	KDM4B
Synonyms	JHDM3B, JMJD2B, KIAA0876
Function	Histone demethylase that specifically demethylates 'Lys-9' of histone H3, thereby playing a role in histone code. Does not demethylate histone H3 'Lys-4', H3 'Lys-27', H3 'Lys-36' nor H4 'Lys- 20'. Only able to demethylate trimethylated H3 'Lys-9', with a weaker activity than KDM4A, KDM4C and KDM4D. Demethylation of Lys residue generates formaldehyde and succinate (PubMed: 16603238 , PubMed: 28262558). Plays a critical role in the development of the central nervous system (CNS).
Cellular Location	Nucleus {ECO:0000255 PROSITE-ProRule:PRU00537, ECO:0000269 PubMed:15927959}

Images



Please note: All products are 'FOR RESEARCH USE ONLY. NOT FOR USE IN DIAGNOSTIC OR THERAPEUTIC PROCEDURES'.