

CRMP5 Rabbit mAb

Catalog # AP78265

Product Information

Application	WB, IHC-P, IP
Primary Accession	Q9BPU6
Reactivity	Rat, Human, Mouse
Host	Rabbit
Clonality	Monoclonal Antibody
Isotype	IgG
Conjugate	Unconjugated
Immunogen	A synthesized peptide derived from human CRMP5
Purification	Affinity Purified
Calculated MW	61421

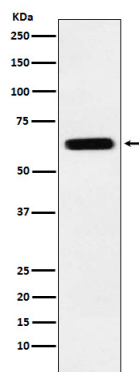
Additional Information

Gene ID	56896
Other Names	DPYSL5
Dilution	WB~~1/500-1/1000 IHC-P~~N/A IP~~N/A
Format	Liquid in 10mM PBS, pH 7.4, 150mM sodium chloride, 0.05% BSA, 0.02% sodium azide and 50% glycerol.
Storage	Store at 4°C short term. Aliquot and store at -20°C long term. Avoid freeze/thaw cycles.

Protein Information

Name	DPYSL5
Synonyms	CRMP5, ULIP6
Function	Involved in the negative regulation of dendrite outgrowth.
Cellular Location	Cytoplasm.

Images



Please note: All products are 'FOR RESEARCH USE ONLY. NOT FOR USE IN DIAGNOSTIC OR THERAPEUTIC PROCEDURES'.