

Actin Regulatory Protein CAPG Rabbit mAb

Catalog # AP78255

Product Information

Application	WB
Primary Accession	P40121
Reactivity	Rat, Human, Mouse
Host	Rabbit
Clonality	Monoclonal Antibody
Isotype	IgG
Conjugate	Unconjugated
Immunogen	A synthesized peptide derived from human CAPG
Purification	Affinity Purified
Calculated MW	38499

Additional Information

Gene ID	822
Other Names	CAPG
Dilution	WB~~1/500-1/1000
Format	Liquid in 10mM PBS, pH 7.4, 150mM sodium chloride, 0.05% BSA, 0.02% sodium azide and 50% glycerol.
Storage	Store at 4°C short term. Aliquot and store at -20°C long term. Avoid freeze/thaw cycles.

Protein Information

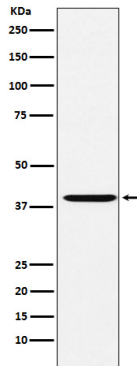
Name	CAPG
Synonyms	AFCP, MCP
Function	Calcium-sensitive protein which reversibly blocks the barbed ends of actin filaments but does not sever preformed actin filaments. May play an important role in macrophage function. May play a role in regulating cytoplasmic and/or nuclear structures through potential interactions with actin. May bind DNA.
Cellular Location	Nucleus. Cytoplasm Melanosome. Cell projection, lamellipodium {ECO:0000250 UniProtKB:P24452}. Cell projection, ruffle {ECO:0000250 UniProtKB:P24452}. Note=In macrophages, may be predominantly cytoplasmic. Nuclear localization was observed in fibroblasts. In macrophages, present at the membrane-cytoplasm interface. In activated macrophages, concentrated in the ruffles of the leading lamellipodia.

{ECO:0000250|UniProtKB:P24452}

Tissue Location

Macrophages and macrophage-like cells.

Images



Please note: All products are 'FOR RESEARCH USE ONLY. NOT FOR USE IN DIAGNOSTIC OR THERAPEUTIC PROCEDURES'.