

REA Rabbit mAb

Catalog # AP78250

Product Information

| | |
|--------------------------|--|
| Application | WB, IHC-P, IF, ICC |
| Primary Accession | Q99623 |
| Reactivity | Rat, Human, Mouse |
| Host | Rabbit |
| Clonality | Monoclonal Antibody |
| Isotype | IgG |
| Conjugate | Unconjugated |
| Immunogen | A synthesized peptide derived from human REA |
| Purification | Affinity Purified |
| Calculated MW | 33296 |

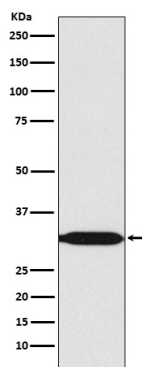
Additional Information

| | |
|--------------------|--|
| Gene ID | 11331 |
| Other Names | PHB2 |
| Dilution | WB~~1/500-1/1000 IHC-P~~N/A IF~~1:50~200 ICC~~N/A |
| Format | Liquid in 10mM PBS, pH 7.4, 150mM sodium chloride, 0.05% BSA, 0.02% sodium azide and 50% glycerol. |
| Storage | Store at 4°C short term. Aliquot and store at -20°C long term. Avoid freeze/thaw cycles. |

Protein Information

| | |
|--------------------------|---|
| Name | PHB2 {ECO:0000312 EMBL:AAH14766.1, ECO:0000312 HGNC:HGNC:30306} |
| Function | Protein with pleiotropic attributes mediated in a cell- compartment- and tissue-specific manner, which include the plasma membrane-associated cell signaling functions, mitochondrial chaperone, and transcriptional co-regulator of transcription factors and sex steroid hormones in the nucleus. |
| Cellular Location | Mitochondrion inner membrane. Cytoplasm. Nucleus. Cell membrane Note=Localizes within both nucleus and cytoplasm in proliferative primary myoblasts and mostly within the nucleus of differentiated primary myoblasts. [Isoform 2]: Mitochondrion inner membrane |
| Tissue Location | Expressed in myoblasts. |

Images



Please note: All products are 'FOR RESEARCH USE ONLY. NOT FOR USE IN DIAGNOSTIC OR THERAPEUTIC PROCEDURES'.