

CDKN2C Rabbit mAb

Catalog # AP78249

Product Information

Application	WB, IHC-P, IF, ICC, IP
Primary Accession	P42773
Reactivity	Rat, Human, Mouse
Host	Rabbit
Clonality	Monoclonal Antibody
Isotype	IgG
Conjugate	Unconjugated
Immunogen	A synthesized peptide derived from human CDKN2C
Purification	Affinity Purified
Calculated MW	18127

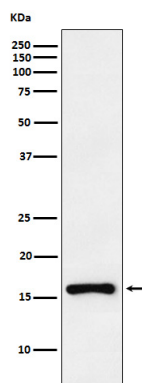
Additional Information

Gene ID	1031
Other Names	CDKN2C
Dilution	WB~~1/500-1/1000 IHC-P~~N/A IF~~1:50~200 ICC~~N/A IP~~N/A
Format	Liquid in 10mM PBS, pH 7.4, 150mM sodium chloride, 0.05% BSA, 0.02% sodium azide and 50% glycerol.
Storage	Store at 4°C short term. Aliquot and store at -20°C long term. Avoid freeze/thaw cycles.

Protein Information

Name	CDKN2C
Synonyms	CDKN6
Function	Interacts strongly with CDK6, weakly with CDK4. Inhibits cell growth and proliferation with a correlated dependence on endogenous retinoblastoma protein RB.
Tissue Location	Highest levels found in skeletal muscle. Also found in pancreas and heart

Images



Please note: All products are 'FOR RESEARCH USE ONLY. NOT FOR USE IN DIAGNOSTIC OR THERAPEUTIC PROCEDURES'.