

# ABCE1 Rabbit mAb

Catalog # AP78239

## Product Information

---

<b>Application</b>	WB, IHC-P, IF, FC, ICC, IP
<b>Primary Accession</b>	<a href="#">P61221</a>
<b>Reactivity</b>	Rat, Human, Mouse
<b>Host</b>	Rabbit
<b>Clonality</b>	Monoclonal Antibody
<b>Isotype</b>	IgG
<b>Conjugate</b>	Unconjugated
<b>Immunogen</b>	A synthesized peptide derived from human ABCE1
<b>Purification</b>	Affinity Purified
<b>Calculated MW</b>	67314

## Additional Information

---

<b>Gene ID</b>	6059
<b>Other Names</b>	ABCE1
<b>Dilution</b>	WB~~1/500-1/1000 IHC-P~~N/A IF~~1:50~200 FC~~1:10~50 ICC~~N/A IP~~N/A
<b>Format</b>	Liquid in 10mM PBS, pH 7.4, 150mM sodium chloride, 0.05% BSA, 0.02% sodium azide and 50% glycerol.
<b>Storage</b>	Store at 4°C short term. Aliquot and store at -20°C long term. Avoid freeze/thaw cycles.

## Protein Information

---

<b>Name</b>	ABCE1
<b>Synonyms</b>	RLI, RNASEL1, RNASELI, RNS4I
<b>Function</b>	Nucleoside-triphosphatase (NTPase) involved in ribosome recycling by mediating ribosome disassembly (PubMed: <a href="#">20122402</a> , PubMed: <a href="#">21448132</a> ). Able to hydrolyze ATP, GTP, UTP and CTP (PubMed: <a href="#">20122402</a> ). Splits ribosomes into free 60S subunits and tRNA- and mRNA-bound 40S subunits (PubMed: <a href="#">20122402</a> , PubMed: <a href="#">21448132</a> ). Acts either after canonical termination facilitated by release factors (ETF1/eRF1) or after recognition of stalled and vacant ribosomes by mRNA surveillance factors (PELO/Pelota) (PubMed: <a href="#">20122402</a> , PubMed: <a href="#">21448132</a> ). Involved in the No-Go Decay (NGD) pathway: recruited to stalled ribosomes by the Pelota-HBS1L complex, and drives the disassembly of stalled ribosomes, followed by degradation of damaged mRNAs as part of the NGD pathway (PubMed: <a href="#">21448132</a> ). Also plays

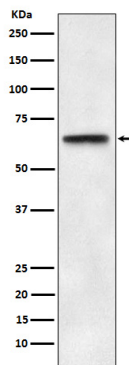
a role in quality control of translation of mitochondrial outer membrane-localized mRNA (PubMed:[29861391](#)). As part of the PINK1-regulated signaling, ubiquitinated by CNOT4 upon mitochondria damage; this modification generates polyubiquitin signals that recruit autophagy receptors to the mitochondrial outer membrane and initiate mitophagy (PubMed:[29861391](#)). RNASEL-specific protein inhibitor which antagonizes the binding of 2-5A (5'-phosphorylated 2',5'-linked oligoadenylates) to RNASEL (PubMed:[9660177](#)). Negative regulator of the anti-viral effect of the interferon-regulated 2-5A/RNASEL pathway (PubMed:[11585831](#), PubMed:[9660177](#), PubMed:[9847332](#)).

#### Cellular Location

Cytoplasm. Mitochondrion

#### Images

---



Please note: All products are 'FOR RESEARCH USE ONLY. NOT FOR USE IN DIAGNOSTIC OR THERAPEUTIC PROCEDURES'.