

# PHAPI2 Rabbit mAb

Catalog # AP78232

## Product Information

<b>Application</b>	WB, IHC-P, IF, FC, ICC
<b>Primary Accession</b>	<a href="#">Q92688</a>
<b>Reactivity</b>	Rat, Human, Mouse
<b>Host</b>	Rabbit
<b>Clonality</b>	Monoclonal Antibody
<b>Isotype</b>	IgG
<b>Conjugate</b>	Unconjugated
<b>Immunogen</b>	A synthesized peptide derived from human PHAPI2 / APRIL
<b>Purification</b>	Affinity Purified
<b>Calculated MW</b>	28788

## Additional Information

<b>Gene ID</b>	10541
<b>Other Names</b>	ANP32B
<b>Dilution</b>	WB~~1/500-1/1000 IHC-P~~N/A IF~~1:50~200 FC~~1:10~50 ICC~~N/A
<b>Format</b>	Liquid in 10mM PBS, pH 7.4, 150mM sodium chloride, 0.05% BSA, 0.02% sodium azide and 50% glycerol.
<b>Storage</b>	Store at 4°C short term. Aliquot and store at -20°C long term. Avoid freeze/thaw cycles.

## Protein Information

<b>Name</b>	ANP32B
<b>Synonyms</b>	APRIL, PHAPI2
<b>Function</b>	Multifunctional protein that is involved in the regulation of many processes including cell proliferation, apoptosis, cell cycle progression or transcription (PubMed: <a href="#">18039846</a> , PubMed: <a href="#">20015864</a> ). Regulates the proliferation of neuronal stem cells, differentiation of leukemic cells and progression from G1 to S phase of the cell cycle. As negative regulator of caspase-3-dependent apoptosis, may act as an antagonist of ANP32A in regulating tissue homeostasis (PubMed: <a href="#">20015864</a> ). Exhibits histone chaperone properties, able to recruit histones to certain promoters, thus regulating the transcription of specific genes (PubMed: <a href="#">18039846</a> , PubMed: <a href="#">20538007</a> ). Also plays an essential role in the nucleocytoplasmic transport of specific mRNAs via the uncommon nuclear mRNA export receptor XPO1/CRM1 (PubMed: <a href="#">17178712</a> ). Participates in the regulation of adequate adaptive immune responses by acting on mRNA

expression and cell proliferation (By similarity).

**Cellular Location**

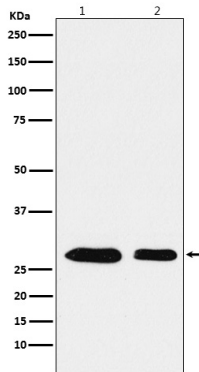
[Isoform 1]: Nucleus. Cytoplasm Note=Accumulates in the nuclei at the S phase.

**Tissue Location**

Expressed in heart, lung, pancreas, prostate and in spleen, thymus and placenta.

## Images

---



Please note: All products are 'FOR RESEARCH USE ONLY. NOT FOR USE IN DIAGNOSTIC OR THERAPEUTIC PROCEDURES'.