

Casein Rabbit mAb

Catalog # AP78226

Product Information

Application	WB, IP
Primary Accession	P47710
Reactivity	Human
Host	Rabbit
Clonality	Monoclonal Antibody
Isotype	IgG
Conjugate	Unconjugated
Immunogen	A synthesized peptide derived from human Casein
Purification	Affinity Purified
Calculated MW	21671

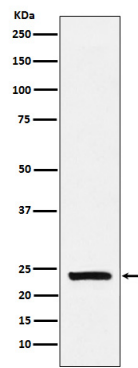
Additional Information

Gene ID	1446
Other Names	CSN1S1
Dilution	WB~~1/500-1/1000 IP~~N/A
Format	Liquid in 10mM PBS, pH 7.4, 150mM sodium chloride, 0.05% BSA, 0.02% sodium azide and 50% glycerol.
Storage	Store at 4°C short term. Aliquot and store at -20°C long term. Avoid freeze/thaw cycles.

Protein Information

Name	CSN1S1
Synonyms	CASA, CSN1
Function	Important role in the capacity of milk to transport calcium phosphate.
Cellular Location	Secreted.
Tissue Location	Mammary gland specific. Secreted in milk.

Images



Please note: All products are 'FOR RESEARCH USE ONLY. NOT FOR USE IN DIAGNOSTIC OR THERAPEUTIC PROCEDURES'.