

MCAK Rabbit mAb

Catalog # AP78225

Product Information

Application	WB, IF, FC, ICC
Primary Accession	Q99661
Reactivity	Human
Host	Rabbit
Clonality	Monoclonal Antibody
Isotype	IgG
Conjugate	Unconjugated
Immunogen	A synthesized peptide derived from human MCAK
Purification	Affinity Purified
Calculated MW	81313

Additional Information

Gene ID	11004
Other Names	KIF2C
Dilution	WB~~1/500-1/1000 IF~~1:50~200 FC~~1:10~50 ICC~~N/A
Format	Liquid in 10mM PBS, pH 7.4, 150mM sodium chloride, 0.05% BSA, 0.02% sodium azide and 50% glycerol.
Storage	Store at 4°C short term. Aliquot and store at -20°C long term. Avoid freeze/thaw cycles.

Protein Information

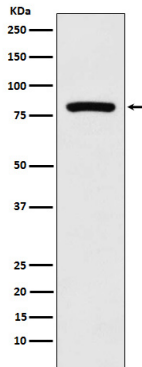
Name	KIF2C
Synonyms	KNSL6
Function	In complex with KIF18B, constitutes the major microtubule plus-end depolymerizing activity in mitotic cells (PubMed: 21820309). Regulates the turnover of microtubules at the kinetochore and functions in chromosome segregation during mitosis (PubMed: 19060894). Plays a role in chromosome congression and is required for the lateral to end- on conversion of the chromosome-microtubule attachment (PubMed: 23891108).
Cellular Location	Cytoplasm, cytoskeleton. Nucleus {ECO:0000250 UniProtKB:P70096} Chromosome, centromere. Chromosome, centromere, kinetochore. Note=Associates with the microtubule network at the growing distal tip (the plus-end) of microtubules, probably through interaction with MTUS2/TIP150 and MAPRE1 (By similarity). Association with microtubule plus ends is also

mediated by interaction with KIF18B. Centromeric localization requires the presence of BUB1 and SGO2. {ECO:0000250|UniProtKB:P70096, ECO:0000269|PubMed:17485487, ECO:0000269|PubMed:21820309}

Tissue Location

Expressed at high levels in thymus and testis, at low levels in small intestine, the mucosal lining of colon, and placenta, and at very low levels in spleen and ovary; expression is not detected in prostate, peripheral blood Leukocytes, heart, brain, lung, liver, skeletal muscle, kidney or pancreas. Isoform 2 is testis- specific.

Images



Please note: All products are 'FOR RESEARCH USE ONLY. NOT FOR USE IN DIAGNOSTIC OR THERAPEUTIC PROCEDURES'.