

# IGFBP1 Rabbit mAb

Catalog # AP78224

## Product Information

---

<b>Application</b>	WB
<b>Primary Accession</b>	<a href="#">P08833</a>
<b>Reactivity</b>	Rat, Human, Mouse
<b>Host</b>	Rabbit
<b>Clonality</b>	Monoclonal Antibody
<b>Isotype</b>	IgG
<b>Conjugate</b>	Unconjugated
<b>Immunogen</b>	A synthesized peptide derived from human IGFBP1
<b>Purification</b>	Affinity Purified
<b>Calculated MW</b>	27904

## Additional Information

---

<b>Gene ID</b>	3484
<b>Other Names</b>	IGFBP1
<b>Dilution</b>	WB~~1/500-1/1000
<b>Format</b>	Liquid in 10mM PBS, pH 7.4, 150mM sodium chloride, 0.05% BSA, 0.02% sodium azide and 50% glycerol.
<b>Storage</b>	Store at 4°C short term. Aliquot and store at -20°C long term. Avoid freeze/thaw cycles.

## Protein Information

---

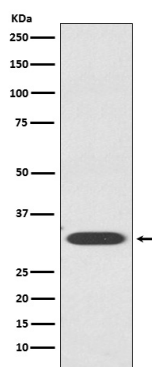
<b>Name</b>	IGFBP1
<b>Synonyms</b>	IBP1
<b>Function</b>	Multifunctional protein that plays a critical role in regulating the availability of IGFs such as IGF1 and IGF2 to their receptors and thereby regulates IGF-mediated cellular processes including cell migration, proliferation, differentiation or apoptosis in a cell-type specific manner (PubMed: <a href="#">11397844</a> , PubMed: <a href="#">15972819</a> ). Also plays a positive role in cell migration by interacting with integrin ITGA5:ITGB1 through its RGD motif (PubMed: <a href="#">7504269</a> ). Mechanistically, binding to integrins leads to activation of focal adhesion kinase/PTK2 and stimulation of the mitogen-activated protein kinase (MAPK) pathway (PubMed: <a href="#">11397844</a> ). Regulates cardiomyocyte apoptosis by suppressing HIF-1alpha/HIF1A ubiquitination and subsequent degradation (By similarity).

Cellular Location

Secreted.

## Images

---



Please note: All products are 'FOR RESEARCH USE ONLY. NOT FOR USE IN DIAGNOSTIC OR THERAPEUTIC PROCEDURES'.