

CD239 Rabbit mAb

Catalog # AP78209

Product Information

Application	WB, IHC-P, FC, IP
Primary Accession	P50895
Reactivity	Rat, Human, Mouse
Host	Rabbit
Clonality	Monoclonal Antibody
Isotype	IgG
Conjugate	Unconjugated
Immunogen	A synthesized peptide derived from human CD239
Purification	Affinity Purified
Calculated MW	67405

Additional Information

Gene ID	4059
Other Names	BCAM
Dilution	WB~~1/500-1/1000 IHC-P~~N/A FC~~1:10~50 IP~~N/A
Format	Liquid in 10mM PBS, pH 7.4, 150mM sodium chloride, 0.05% BSA, 0.02% sodium azide and 50% glycerol.
Storage	Store at 4°C short term. Aliquot and store at -20°C long term. Avoid freeze/thaw cycles.

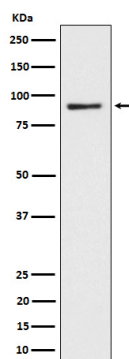
Protein Information

Name	BCAM
Synonyms	LU, MSK19
Function	Transmembrane glycoprotein that functions as both a receptor and an adhesion molecule playing a crucial role in cell adhesion, motility, migration and invasion (PubMed: 9616226 , PubMed: 31413112). Extracellular domain enables binding to extracellular matrix proteins, such as laminin, integrin and other ligands while its intracellular domain interacts with cytoskeletal proteins like hemoglobin, facilitating cell signal transduction (PubMed: 17158232). Serves as a receptor for laminin alpha-5/LAMA5 to promote cell adhesion (PubMed: 15975931). Mechanistically, JAK2 induces BCAM phosphorylation and activates its adhesion to laminin by stimulating a Rap1/AKT signaling pathway in the absence of EPOR (PubMed: 23160466).
Cellular Location	Cell membrane; Single-pass type I membrane protein

Tissue Location

Wide tissue distribution (highest in the pancreas and very low in brain). Closely associated with the basal layer of cells in epithelia and the endothelium of blood vessel walls

Images



Please note: All products are 'FOR RESEARCH USE ONLY. NOT FOR USE IN DIAGNOSTIC OR THERAPEUTIC PROCEDURES'.