

GSTM1 Rabbit mAb

Catalog # AP78185

Product Information

Application	WB
Primary Accession	P09488
Reactivity	Rat, Human, Mouse
Host	Rabbit
Clonality	Monoclonal Antibody
Isotype	IgG
Conjugate	Unconjugated
Immunogen	A synthesized peptide derived from human Glutathione S Transferase mu
Purification	Affinity Purified
Calculated MW	25712

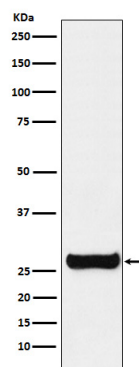
Additional Information

Gene ID	2944
Other Names	GSTM1
Dilution	WB~~1/500-1/1000
Format	Liquid in 10mM PBS, pH 7.4, 150mM sodium chloride, 0.05% BSA, 0.02% sodium azide and 50% glycerol.
Storage	Store at 4°C short term. Aliquot and store at -20°C long term. Avoid freeze/thaw cycles.

Protein Information

Name	GSTM1 (HGNC:4632)
Synonyms	GST1
Function	Conjugation of reduced glutathione to a wide number of exogenous and endogenous hydrophobic electrophiles. Involved in the formation of glutathione conjugates of both prostaglandin A2 (PGA2) and prostaglandin J2 (PGJ2) (PubMed: 9084911). Participates in the formation of novel hepoxilin regioisomers (PubMed: 21046276).
Cellular Location	Cytoplasm.
Tissue Location	Liver (at protein level).

Images



Please note: All products are 'FOR RESEARCH USE ONLY. NOT FOR USE IN DIAGNOSTIC OR THERAPEUTIC PROCEDURES'.