

ATP1B3 Rabbit mAb

Catalog # AP78178

Product Information

Application	WB, IHC-P
Primary Accession	P54709
Reactivity	Rat, Human, Mouse
Host	Rabbit
Clonality	Monoclonal Antibody
Isotype	IgG
Conjugate	Unconjugated
Immunogen	A synthesized peptide derived from human ATP1B3
Purification	Affinity Chromatography
Calculated MW	31513

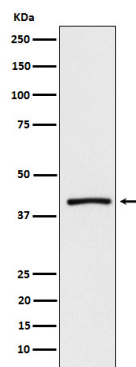
Additional Information

Gene ID	483
Other Names	ATP1B3
Dilution	WB~~1/500-1/1000 IHC-P~~N/A
Format	Liquid in 10mM PBS, pH 7.4, 150mM sodium chloride, 0.05% BSA, 0.02% sodium azide and 50% glycerol.
Storage	Store at 4°C short term. Aliquot and store at -20°C long term. Avoid freeze/thaw cycles.

Protein Information

Name	ATP1B3
Function	This is the non-catalytic component of the active enzyme, which catalyzes the hydrolysis of ATP coupled with the exchange of Na(+) and K(+) ions across the plasma membrane. The exact function of the beta-3 subunit is not known.
Cellular Location	Apical cell membrane {ECO:0000250 UniProtKB:Q63377}; Single-pass type II membrane protein. Basolateral cell membrane {ECO:0000250 UniProtKB:Q63377}; Single-pass type II membrane protein. Melanosome Note=Identified by mass spectrometry in melanosome fractions from stage I to stage IV

Images



Please note: All products are 'FOR RESEARCH USE ONLY. NOT FOR USE IN DIAGNOSTIC OR THERAPEUTIC PROCEDURES'.