

# Cripto 1 Rabbit mAb

Catalog # AP78160

## Product Information

<b>Application</b>	WB, IF, FC, ICC, IP
<b>Primary Accession</b>	<a href="#">P13385</a>
<b>Reactivity</b>	Human
<b>Host</b>	Rabbit
<b>Clonality</b>	Monoclonal Antibody
<b>Isotype</b>	IgG
<b>Conjugate</b>	Unconjugated
<b>Immunogen</b>	A synthesized peptide derived from human Cripto1
<b>Purification</b>	Affinity Chromatography
<b>Calculated MW</b>	21169

## Additional Information

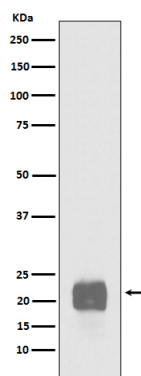
<b>Gene ID</b>	6997
<b>Other Names</b>	TDGF1
<b>Dilution</b>	WB~~1/500-1/1000 IF~~1:50~200 FC~~1:10~50 ICC~~N/A IP~~N/A
<b>Format</b>	Liquid in 10mM PBS, pH 7.4, 150mM sodium chloride, 0.05% BSA, 0.02% sodium azide and 50% glycerol.
<b>Storage</b>	Store at 4°C short term. Aliquot and store at -20°C long term. Avoid freeze/thaw cycles.

## Protein Information

<b>Name</b>	CRIPTO {ECO:0000303 PubMed:2792079, ECO:0000312 HGNC:HGNC:11701}
<b>Function</b>	GPI-anchored cell membrane protein involved in Nodal signaling. Cell-associated CRIPTO acts as a Nodal coreceptor in cis. Shedding of CRIPTO by TMEM8A modulates Nodal signaling by allowing soluble CRIPTO to act as a Nodal coreceptor on other cells (PubMed: <a href="#">27881714</a> ). Could play a role in the determination of the epiblastic cells that subsequently give rise to the mesoderm (PubMed: <a href="#">11909953</a> ).
<b>Cellular Location</b>	Cell membrane; Lipid-anchor, GPI-anchor. Secreted. Note=Released from the cell membrane by GPI cleavage.
<b>Tissue Location</b>	Preferentially expressed in gastric and colorectal carcinomas than in their normal counterparts. Expressed in breast and lung.

## Images

---



Please note: All products are 'FOR RESEARCH USE ONLY. NOT FOR USE IN DIAGNOSTIC OR THERAPEUTIC PROCEDURES'.