

BOB1 Rabbit mAb

Catalog # AP78149

Product Information

Application	WB, IHC-P, IF, FC, ICC
Primary Accession	Q16633
Reactivity	Human
Host	Rabbit
Clonality	Monoclonal Antibody
Isotype	IgG
Conjugate	Unconjugated
Immunogen	A synthesized peptide derived from human BOB1
Purification	Affinity Chromatography
Calculated MW	27436

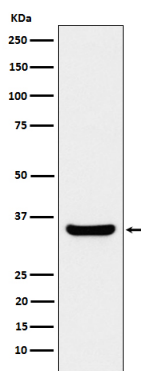
Additional Information

Gene ID	5450
Other Names	POU2AF1
Dilution	WB~~1/500-1/1000 IHC-P~~N/A IF~~1:50~200 FC~~1:10~50 ICC~~N/A
Format	Liquid in 10mM PBS, pH 7.4, 150mM sodium chloride, 0.05% BSA, 0.02% sodium azide and 50% glycerol.
Storage	Store at 4°C short term. Aliquot and store at -20°C long term. Avoid freeze/thaw cycles.

Protein Information

Name	POU2AF1 (HGNC:9211)
Function	Transcriptional coactivator that specifically associates with either POU2F1/OCT1 or POU2F2/OCT2 (PubMed: 7859290). It boosts the POU2F1/OCT1 mediated promoter activity and to a lesser extent, that of POU2F2/OCT2 (PubMed: 7779176). It recognizes the POU domains of POU2F1/OCT1 and POU2F2/OCT2 (PubMed: 7779176). It is essential for the response of B-cells to antigens and required for the formation of germinal centers (PubMed: 7623806 , PubMed: 7859290). Regulates IL6 expression in B cells as POU2F2/OCT2 coactivator (By similarity).
Cellular Location	Nucleus.
Tissue Location	B-cell specific (PubMed: 7779176 , PubMed: 7859290). Detected in mainly in spleen, but also in thymus, peripheral blood leukocyte and small intestine (PubMed: 7779176 , PubMed: 7859290)

Images



Please note: All products are 'FOR RESEARCH USE ONLY. NOT FOR USE IN DIAGNOSTIC OR THERAPEUTIC PROCEDURES'.