

GNB2 Rabbit mAb

Catalog # AP78135

Product Information

Application	WB, IHC-P, IF, FC, ICC, IP
Primary Accession	P62879
Reactivity	Rat, Human, Mouse
Host	Rabbit
Clonality	Monoclonal Antibody
Isotype	IgG
Conjugate	Unconjugated
Immunogen	A synthesized peptide derived from human GNB2
Purification	Affinity Chromatography
Calculated MW	37331

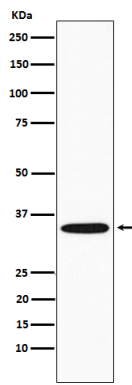
Additional Information

Gene ID	2783
Other Names	GNB2
Dilution	WB~~1/500-1/1000 IHC-P~~N/A IF~~1:50~200 FC~~1:10~50 ICC~~N/A IP~~N/A
Format	Liquid in 10mM PBS, pH 7.4, 150mM sodium chloride, 0.05% BSA, 0.02% sodium azide and 50% glycerol.
Storage	Store at 4°C short term. Aliquot and store at -20°C long term. Avoid freeze/thaw cycles.

Protein Information

Name	GNB2
Function	Guanine nucleotide-binding proteins (G proteins) are involved as a modulator or transducer in various transmembrane signaling systems. The beta and gamma chains are required for the GTPase activity, for replacement of GDP by GTP, and for G protein-effector interaction.
Cellular Location	Cytoplasm, perinuclear region. Cell membrane
Tissue Location	Expressed in all cardiac subcompartments and in the brain, with highest levels in the atrioventricular node and brain

Images



Please note: All products are 'FOR RESEARCH USE ONLY. NOT FOR USE IN DIAGNOSTIC OR THERAPEUTIC PROCEDURES'.