

FYB Rabbit mAb

Catalog # AP78120

Product Information

Application	WB, IHC-P, IF, ICC
Primary Accession	O15117
Reactivity	Human, Mouse
Host	Rabbit
Clonality	Monoclonal Antibody
Isotype	IgG
Conjugate	Unconjugated
Immunogen	A synthesized peptide derived from human FYB
Purification	Affinity Chromatography
Calculated MW	85387

Additional Information

Gene ID	2533
Other Names	FYB1
Dilution	WB~~1/500-1/1000 IHC-P~~N/A IF~~1:50~200 ICC~~N/A
Format	Liquid in 10mM PBS, pH 7.4, 150mM sodium chloride, 0.05% BSA, 0.02% sodium azide and 50% glycerol.
Storage	Store at 4°C short term. Aliquot and store at -20°C long term. Avoid freeze/thaw cycles.

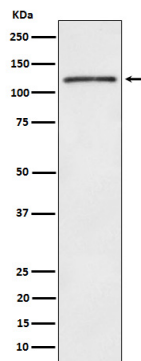
Protein Information

Name	FYB1 (HGNC:4036)
Synonyms	FYB, SLAP130
Function	Acts as an adapter protein of the FYN and LCP2 signaling cascades in T-cells (By similarity). May play a role in linking T-cell signaling to remodeling of the actin cytoskeleton (PubMed: 10747096 , PubMed: 16980616). Modulates the expression of IL2 (By similarity). Involved in platelet activation (By similarity). Prevents the degradation of SKAP1 and SKAP2 (PubMed: 15849195). May be involved in high affinity immunoglobulin epsilon receptor signaling in mast cells (By similarity).
Cellular Location	Cytoplasm. Nucleus {ECO:0000255 PROSITE-ProRule:PRU00768}. Cell junction {ECO:0000250 UniProtKB:O35601}. Note=Colocalizes with TMEM47 at cell-cell contacts in podocytes. {ECO:0000250 UniProtKB:O35601}

Tissue Location

Expressed in hematopoietic tissues such as myeloid and T-cells, spleen and thymus. Not expressed in B-cells, nor in non- lymphoid tissues

Images



Please note: All products are 'FOR RESEARCH USE ONLY. NOT FOR USE IN DIAGNOSTIC OR THERAPEUTIC PROCEDURES'.