

PEN2 Rabbit mAb

Catalog # AP78110

Product Information

| | |
|--------------------------|---|
| Application | WB, IHC-P, IF, FC, ICC |
| Primary Accession | Q9NZ42 |
| Reactivity | Rat, Human, Mouse |
| Host | Rabbit |
| Clonality | Monoclonal Antibody |
| Isotype | IgG |
| Conjugate | Unconjugated |
| Immunogen | A synthesized peptide derived from human PEN2 |
| Purification | Affinity Chromatography |
| Calculated MW | 12029 |

Additional Information

| | |
|--------------------|--|
| Gene ID | 55851 |
| Other Names | PSENEN |
| Dilution | WB~~1/500-1/1000 IHC-P~~N/A IF~~1:50~200 FC~~1:10~50 ICC~~N/A |
| Format | Liquid in 10mM PBS, pH 7.4, 150mM sodium chloride, 0.05% BSA, 0.02% sodium azide and 50% glycerol. |
| Storage | Store at 4°C short term. Aliquot and store at -20°C long term. Avoid freeze/thaw cycles. |

Protein Information

| | |
|-----------------|--|
| Name | PSENEN |
| Synonyms | PEN2 |
| Function | Essential subunit of the gamma-secretase complex, an endoprotease complex that catalyzes the intramembrane cleavage of integral membrane proteins such as Notch receptors and APP (amyloid- beta precursor protein) (PubMed: 12522139 , PubMed: 12679784 , PubMed: 12740439 , PubMed: 12763021 , PubMed: 24941111 , PubMed: 30598546 , PubMed: 30630874). The gamma-secretase complex plays a role in Notch and Wnt signaling cascades and regulation of downstream processes via its role in processing key regulatory proteins, and by regulating cytosolic CTNNB1 levels (Probable). PSENEN modulates both endoproteolysis of presenilin and gamma-secretase activity (PubMed: 12522139 , PubMed: 12679784 , PubMed: 12740439 , PubMed: 12763021 , PubMed: 24941111). |

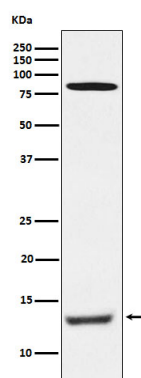
Cellular Location

Endoplasmic reticulum membrane; Multi-pass membrane protein. Golgi apparatus, Golgi stack membrane; Multi-pass membrane protein. Cell membrane; Multi-pass membrane protein. Membrane; Multi-pass membrane protein Note=Predominantly located in the endoplasmic reticulum and in the cis- Golgi.

Tissue Location

Widely expressed. Expressed in leukocytes, lung, placenta, small intestine, liver, kidney, spleen thymus, skeletal muscle, heart and brain.

Images



Please note: All products are 'FOR RESEARCH USE ONLY. NOT FOR USE IN DIAGNOSTIC OR THERAPEUTIC PROCEDURES'.