

CXCR5 Rabbit mAb

Catalog # AP78106

Product Information

Application	WB, IF, FC, ICC
Primary Accession	P32302
Reactivity	Rat, Human, Mouse
Host	Rabbit
Clonality	Monoclonal Antibody
Isotype	IgG
Conjugate	Unconjugated
Immunogen	A synthesized peptide derived from human CXCR5
Purification	Affinity Chromatography
Calculated MW	41955

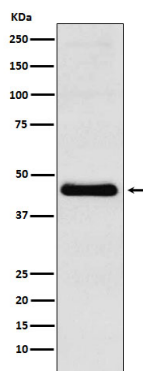
Additional Information

Gene ID	643
Other Names	CXCR5
Dilution	WB~~1/500-1/1000 IF~~1:50~200 FC~~1:10~50 ICC~~N/A
Format	Liquid in 10mM PBS, pH 7.4, 150mM sodium chloride, 0.05% BSA, 0.02% sodium azide and 50% glycerol.
Storage	Store at 4°C short term. Aliquot and store at -20°C long term. Avoid freeze/thaw cycles.

Protein Information

Name	CXCR5
Synonyms	BLR1, MDR15
Function	Cytokine receptor that binds to B-lymphocyte chemoattractant (BLC). Involved in B-cell migration into B-cell follicles of spleen and Peyer patches but not into those of mesenteric or peripheral lymph nodes. May have a regulatory function in Burkitt lymphoma (BL) lymphomagenesis and/or B-cell differentiation.
Cellular Location	Cell membrane; Multi-pass membrane protein.
Tissue Location	Expression in mature B-cells and Burkitt lymphoma cells

Images



Please note: All products are 'FOR RESEARCH USE ONLY. NOT FOR USE IN DIAGNOSTIC OR THERAPEUTIC PROCEDURES'.